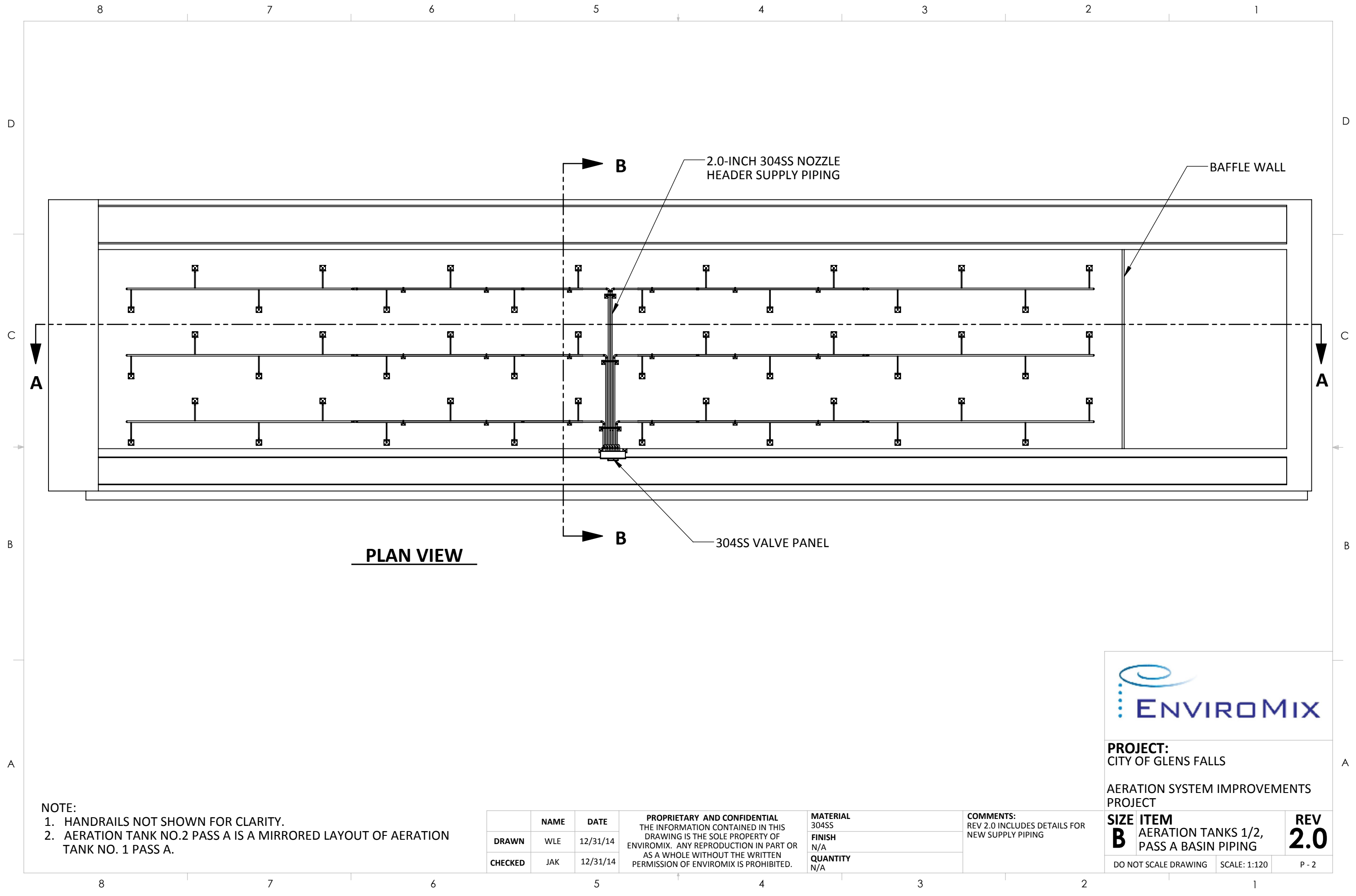


NOTE:
1. AERATION TANK NO.2 PASS A IS A MIRRORED LAYOUT OF AERATION TANK NO. 1 PASS A.

	NAME	DATE	PROPRIETARY AND CONFIDENTIAL THE INFORMATION CONTAINED IN THIS DRAWING IS THE SOLE PROPERTY OF ENVIROMIX. ANY REPRODUCTION IN PART OR AS A WHOLE WITHOUT THE WRITTEN PERMISSION OF ENVIROMIX IS PROHIBITED.	MATERIAL 304SS	COMMENTS: REV 2.0 INCLUDES DETAILS FOR NEW SUPPLY PIPING	SIZE B	ITEM AERATION TANKS 1/2, PASS A BASIN PIPING		REV 2.0
DRAWN	WLE	12/31/14		FINISH N/A					
CHECKED	JAK	12/31/14		QUANTITY N/A					
DO NOT SCALE DRAWING			SCALE: 1:180			P - 1			



- NOTE:
- 1. HANDRAILS NOT SHOWN FOR CLARITY.
 - 2. AERATION TANK NO.2 PASS A IS A MIRRORED LAYOUT OF AERATION TANK NO. 1 PASS A.

	NAME	DATE	PROPRIETARY AND CONFIDENTIAL THE INFORMATION CONTAINED IN THIS DRAWING IS THE SOLE PROPERTY OF ENVIROMIX. ANY REPRODUCTION IN PART OR AS A WHOLE WITHOUT THE WRITTEN PERMISSION OF ENVIROMIX IS PROHIBITED.	MATERIAL 304SS	COMMENTS: REV 2.0 INCLUDES DETAILS FOR NEW SUPPLY PIPING	SIZE B	ITEM AERATION TANKS 1/2, PASS A BASIN PIPING	REV 2.0
DRAWN	WLE	12/31/14		FINISH N/A				
CHECKED	JAK	12/31/14		QUANTITY N/A				

D

C

B

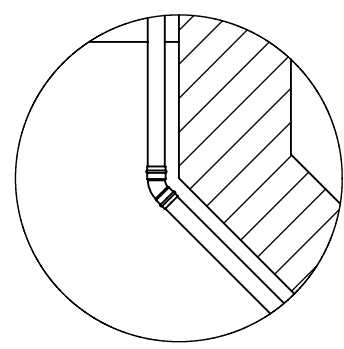
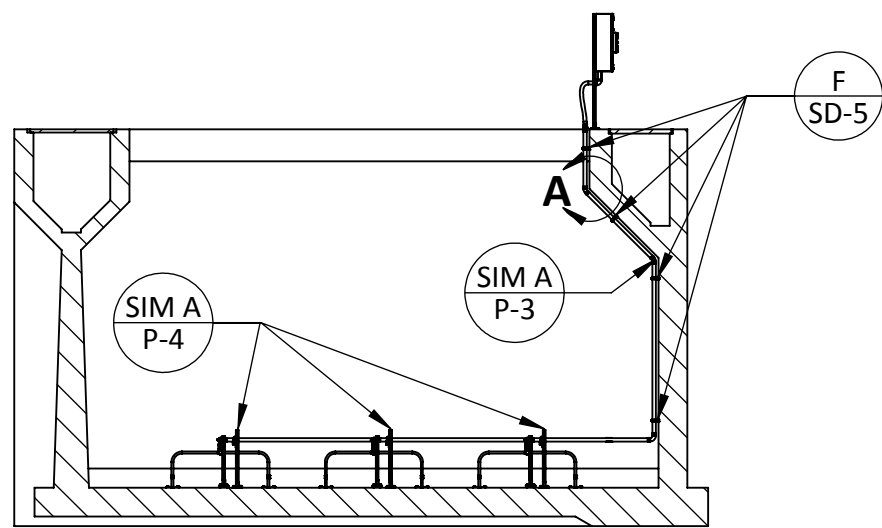
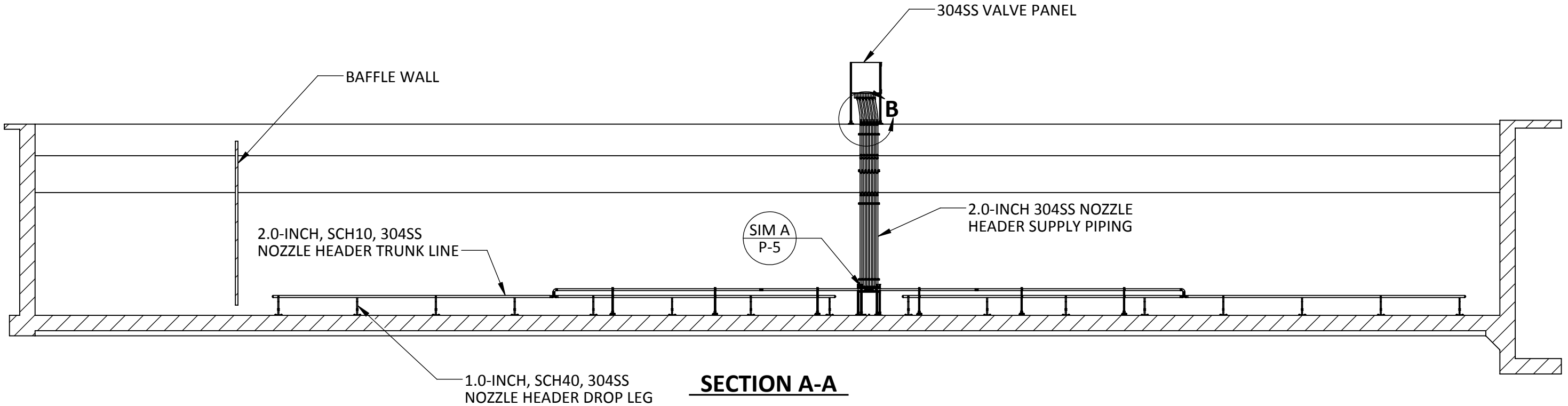
A

D

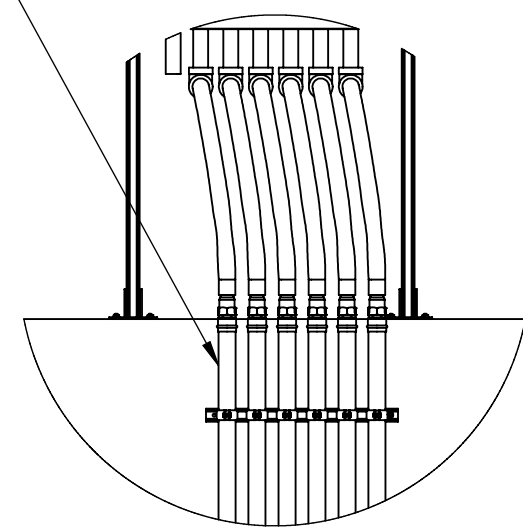
C

B

A



DETAIL A
SCALE 1 : 24



DETAIL B
SCALE 1 : 24

VIEW, SECTION, OR
DETAIL NUMBER
A
P-1
SHEET NUMBER ON
WHICH VIEW,
SECTION, OR
DETAIL NUMBER

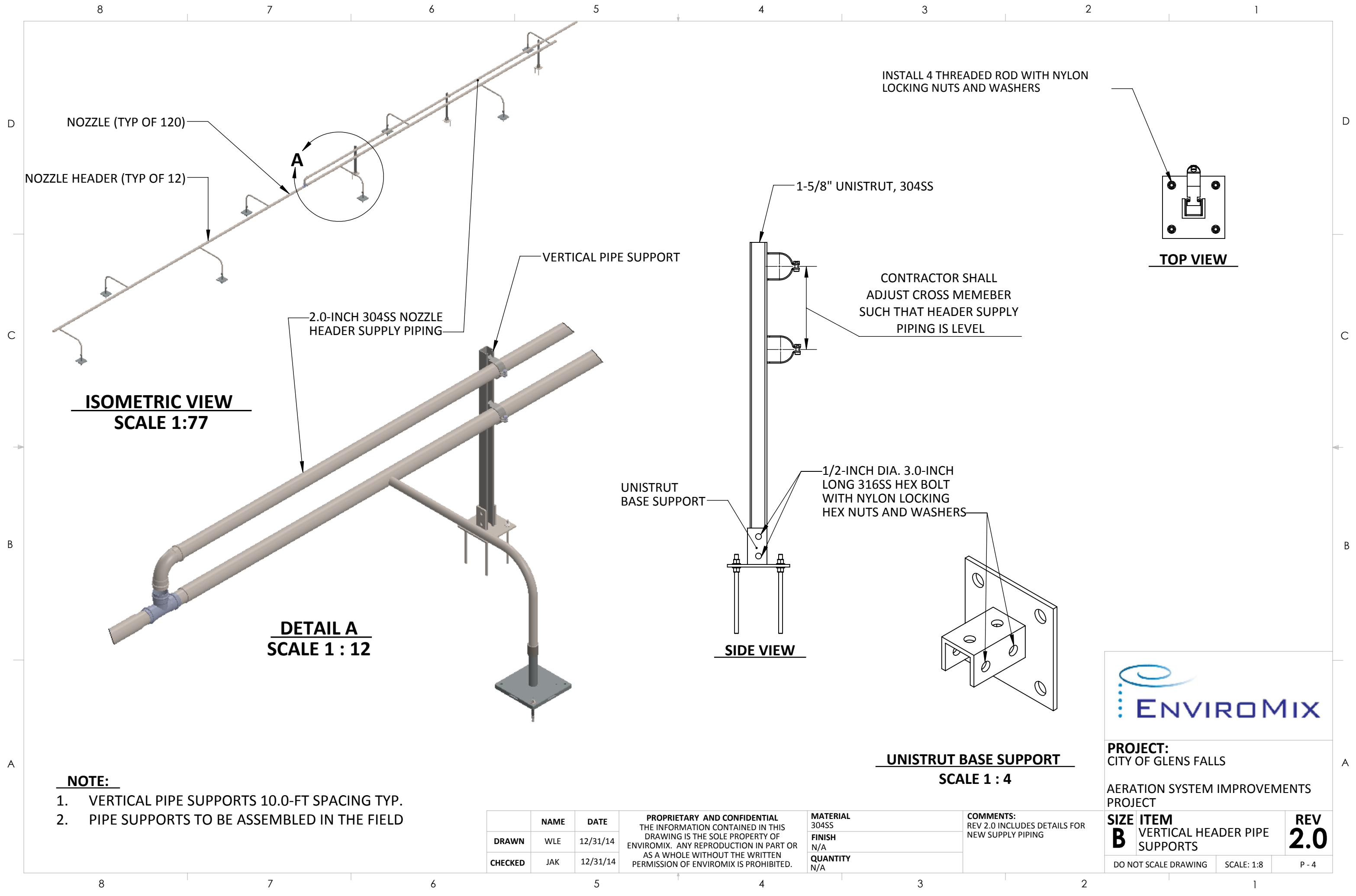
NOTE:
1. HANDRAILS NOT SHOWN FOR CLARITY.
2. AERATION TANK NO.2 PASS A IS A MIRRORED LAYOUT OF AERATION TANK NO. 1 PASS A.

	NAME	DATE	PROPRIETARY AND CONFIDENTIAL THE INFORMATION CONTAINED IN THIS DRAWING IS THE SOLE PROPERTY OF ENVIROMIX. ANY REPRODUCTION IN PART OR AS A WHOLE WITHOUT THE WRITTEN PERMISSION OF ENVIROMIX IS PROHIBITED.	MATERIAL 304SS	COMMENTS: REV 2.0 INCLUDES DETAILS FOR NEW SUPPLY PIPING	SIZE B	ITEM AERATION TANKS 1/2, PASS A BASIN PIPING	REV 2.0
DRAWN	WLE	12/31/14		FINISH N/A				
CHECKED	JAK	12/31/14		QUANTITY N/A				
DO NOT SCALE DRAWING			SCALE: 1:120		P - 3			



PROJECT:
CITY OF GLENS FALLS


AERATION SYSTEM IMPROVEMENTS
PROJECT



NOTE:

1. VERTICAL PIPE SUPPORTS 10.0-FT SPACING TYP.
2. PIPE SUPPORTS TO BE ASSEMBLED IN THE FIELD

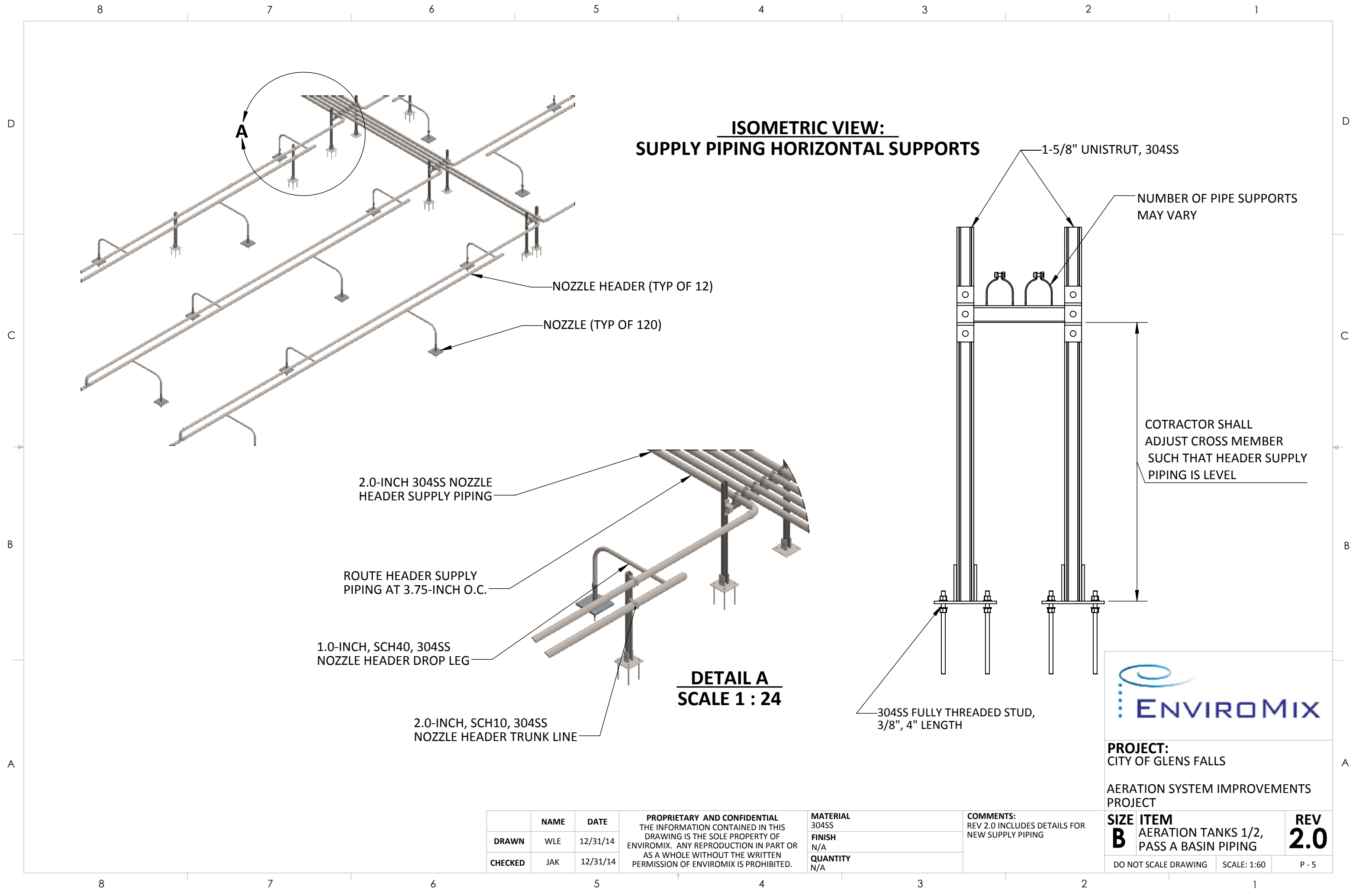
	NAME	DATE	PROPRIETARY AND CONFIDENTIAL THE INFORMATION CONTAINED IN THIS DRAWING IS THE SOLE PROPERTY OF ENVIROMIX. ANY REPRODUCTION IN PART OR AS A WHOLE WITHOUT THE WRITTEN PERMISSION OF ENVIROMIX IS PROHIBITED.	MATERIAL 304SS	COMMENTS: REV 2.0 INCLUDES DETAILS FOR NEW SUPPLY PIPING
DRAWN	WLE	12/31/14		FINISH N/A	
CHECKED	JAK	12/31/14		QUANTITY N/A	



PROJECT:
CITY OF GLENS FALLS

AERATION SYSTEM IMPROVEMENTS
PROJECT

SIZE B	ITEM VERTICAL HEADER PIPE SUPPORTS	REV 2.0
DO NOT SCALE DRAWING	SCALE: 1:8	P - 4



PROJECT:
CITY OF GLENS FALLS

AERATION SYSTEM IMPROVEMENTS
PROJECT

SIZE	ITEM	REV
B	AERATION TANKS 1/2, PASS A BASIN PIPING	2.0

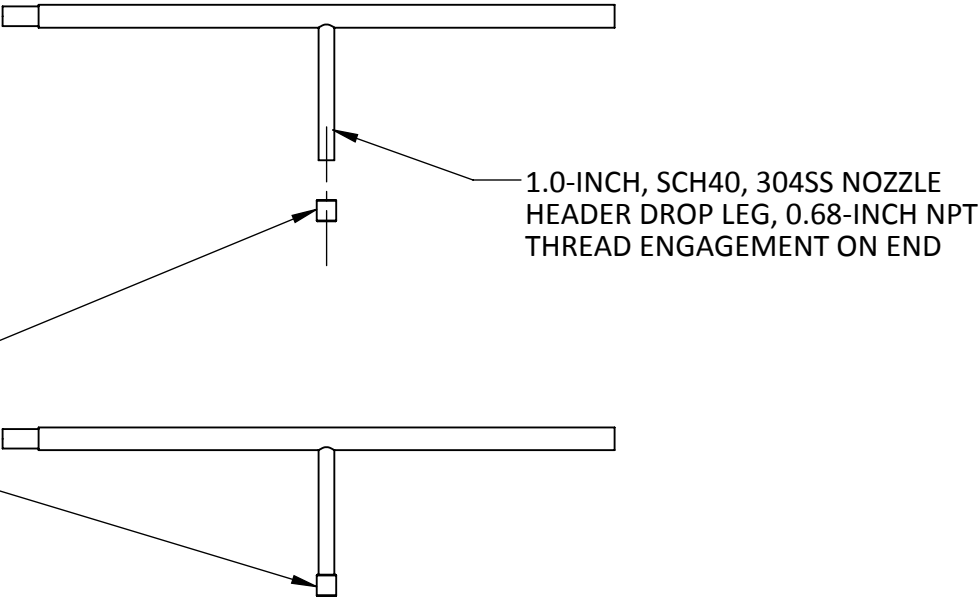
	NAME	DATE	PROPRIETARY AND CONFIDENTIAL THE INFORMATION CONTAINED IN THIS DRAWING IS THE SOLE PROPERTY OF ENVIROMIX. ANY REPRODUCTION IN PART OR AS A WHOLE WITHOUT THE WRITTEN PERMISSION OF ENVIROMIX IS PROHIBITED.	MATERIAL 304SS	COMMENTS: REV 2.0 INCLUDES DETAILS FOR NEW SUPPLY PIPING
DRAWN	WLE	12/31/14		FINISH N/A	
CHECKED	JAK	12/31/14		QUANTITY N/A	

AERATION SYSTEM IMPROVEMENTS PROJECT

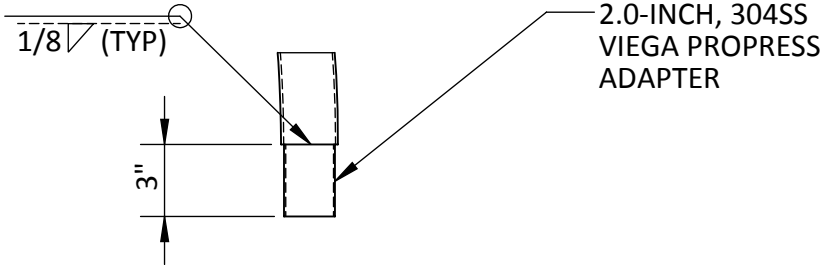
CITY OF GLENS FALLS

HEADER	PAGE	QUANTITY
HEADER 1	H-2	12

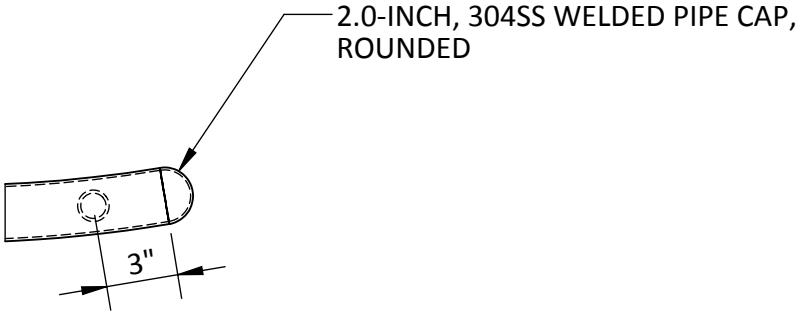
HEADER TO BE SHIPPED TO PROJECT SITE WITH COUPLINGS INSTALLED WITH THREAD TAPE & SEALANT



DETAIL AA
SCALE 1 : 15



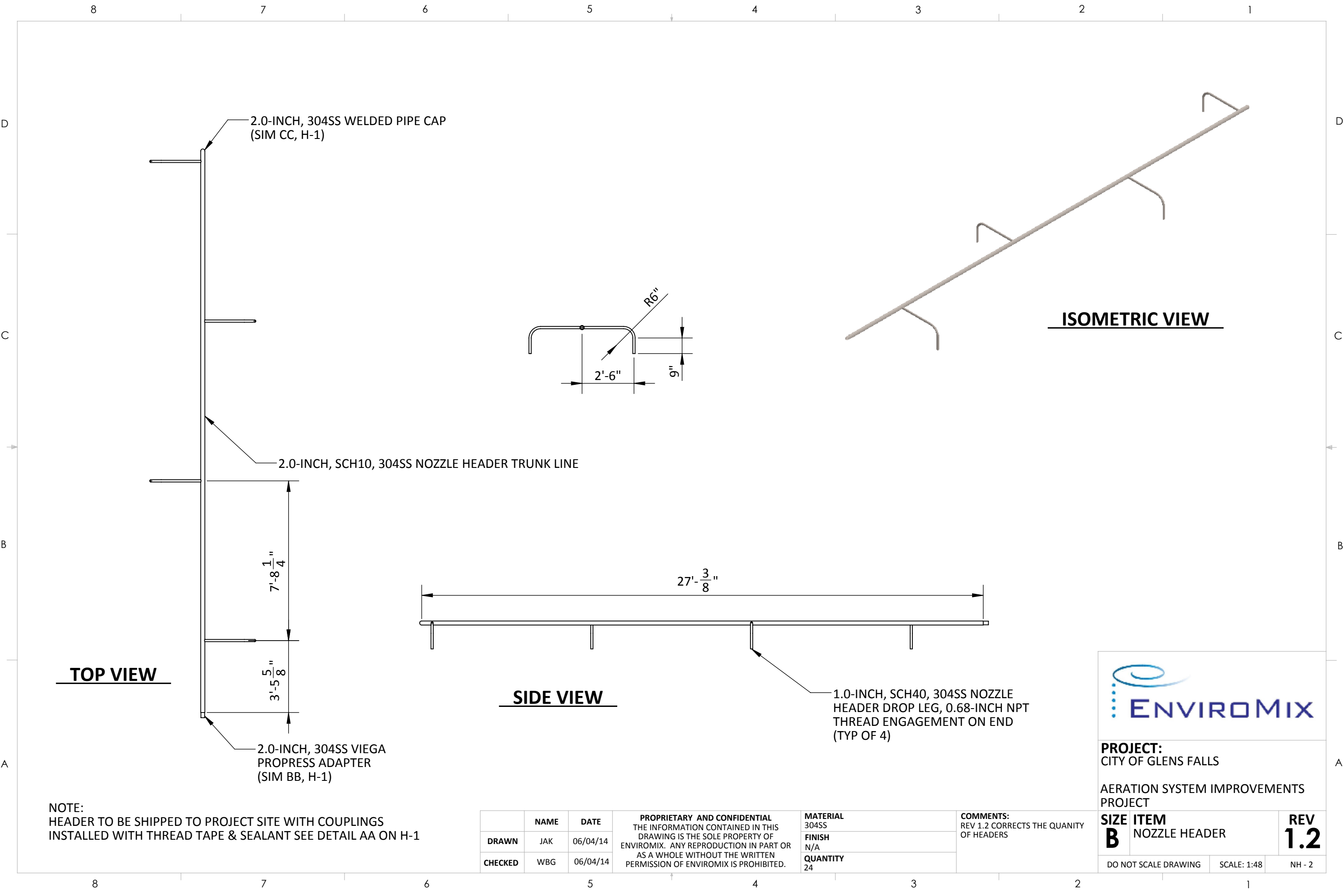
DETAIL BB
SCALE 1 : 4



DETAIL CC
SCALE 1 : 4

NOTE:
ALL WELDS NEED TO BE PASSIVATED
BEFORE SHIPPED TO PROJECT SITE

	NAME	DATE	PROPRIETARY AND CONFIDENTIAL THE INFORMATION CONTAINED IN THIS DRAWING IS THE SOLE PROPERTY OF ENVIROMIX. ANY REPRODUCTION IN PART OR AS A WHOLE WITHOUT THE WRITTEN PERMISSION OF ENVIROMIX IS PROHIBITED.	MATERIAL 304SS	COMMENTS: REV 1.2 CORRECTS THE QUANTITY OF HEADERS	SIZE B	ITEM CONTENTS / STANDARD DETAILS			REV 1.2
DRAWN	JAK	06/04/14		FINISH N/A						
CHECKED	WBG	06/04/14		QUANTITY 24			DO NOT SCALE DRAWING			



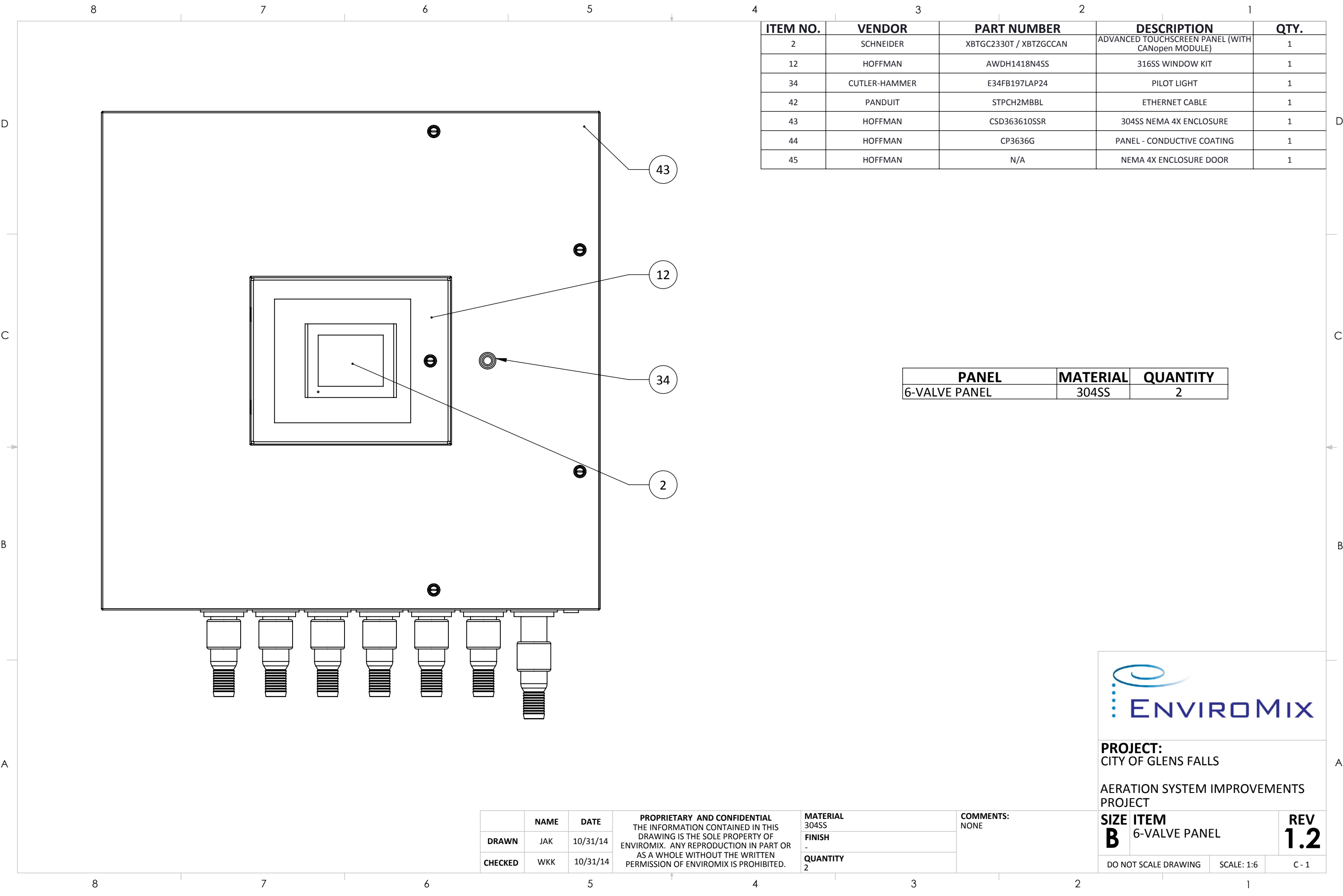
TOP VIEW

SIDE VIEW

ISOMETRIC VIEW

NOTE:
HEADER TO BE SHIPPED TO PROJECT SITE WITH COUPLINGS
INSTALLED WITH THREAD TAPE & SEALANT SEE DETAIL AA ON H-1

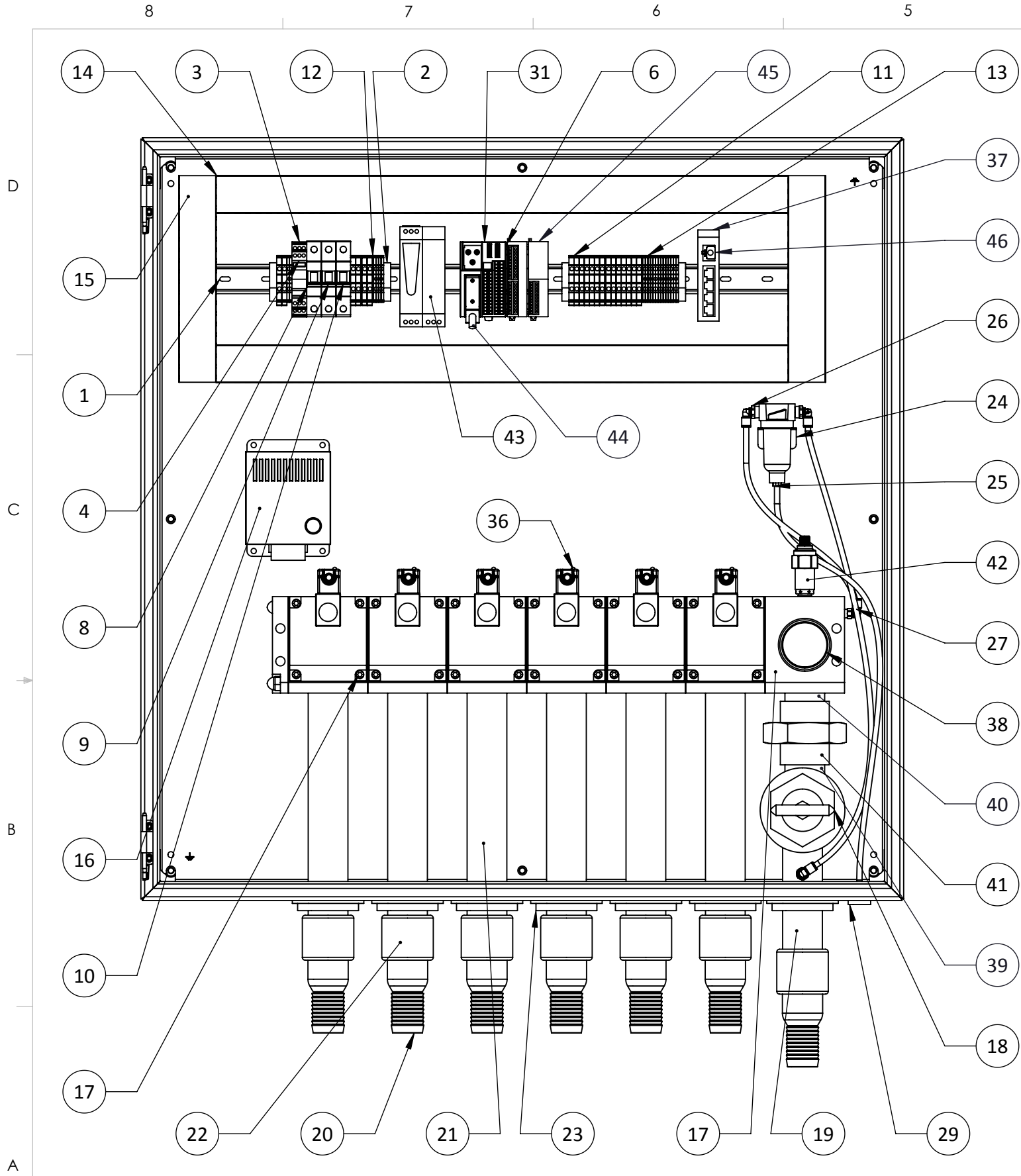
	NAME	DATE	PROPRIETARY AND CONFIDENTIAL THE INFORMATION CONTAINED IN THIS DRAWING IS THE SOLE PROPERTY OF ENVIROMIX. ANY REPRODUCTION IN PART OR AS A WHOLE WITHOUT THE WRITTEN PERMISSION OF ENVIROMIX IS PROHIBITED.	MATERIAL 304SS	COMMENTS: REV 1.2 CORRECTS THE QUANTITY OF HEADERS	SIZE B		ITEM NOZZLE HEADER		REV 1.2	
DRAWN	JAK	06/04/14		FINISH N/A							
CHECKED	WBG	06/04/14		QUANTITY 24		DO NOT SCALE DRAWING		SCALE: 1:48			NH - 2



ITEM NO.	VENDOR	PART NUMBER	DESCRIPTION	QTY.
2	SCHNEIDER	XBTGC2330T / XBTZGCCAN	ADVANCED TOUCHSCREEN PANEL (WITH CANopen MODULE)	1
12	HOFFMAN	AWDH1418N4SS	316SS WINDOW KIT	1
34	CUTLER-HAMMER	E34FB197LAP24	PILOT LIGHT	1
42	PANDUIT	STPCH2MBBL	ETHERNET CABLE	1
43	HOFFMAN	CSD363610SSR	304SS NEMA 4X ENCLOSURE	1
44	HOFFMAN	CP3636G	PANEL - CONDUCTIVE COATING	1
45	HOFFMAN	N/A	NEMA 4X ENCLOSURE DOOR	1


PANEL	MATERIAL	QUANTITY
6-VALVE PANEL	304SS	2

	NAME	DATE	PROPRIETARY AND CONFIDENTIAL THE INFORMATION CONTAINED IN THIS DRAWING IS THE SOLE PROPERTY OF ENVIROMIX. ANY REPRODUCTION IN PART OR AS A WHOLE WITHOUT THE WRITTEN PERMISSION OF ENVIROMIX IS PROHIBITED.	MATERIAL 304SS	COMMENTS: NONE	SIZE B	ITEM 6-VALVE PANEL		REV 1.2
DRAWN	JAK	10/31/14		FINISH -					
CHECKED	WKK	10/31/14		QUANTITY 2		DO NOT SCALE DRAWING		SCALE: 1:6	C - 1



ITEM NO.	VENDOR	PART NUMBER	DESCRIPTION	QTY.
1	WEIDMULLER	051450000	35MM DIN RAIL-27-INCH	1
2	WEIDMULLER	0383560000	END ANCHOR	4
3	PHOENIX CONTACT	2839282	SURGE SUPPRESSOR BASE	1
4	PHOENIX CONTACT	2839334	SURGE SUPPRESSOR ELEMENT	1
5	SCHNEIDER	XBTGC2330T / XBTZGCCAN	ADVANCED TOUCHSCREEN PANEL (WITH CANopen MODULE)	1
6	SCHNEIDER ELECTRIC	TM2DRA16RT	EXPANSION, 16 OUT RELAY, RM.TBK	1
7	HOFFMAN	AWDH1418N4SS	316SS WINDOW KIT	1
8	SQUARE D	MG24119	20 AMP CIRCUIT BREAKER	1
9	SQUARE D	MG24111	2 AMP CIRCUIT BREAKER	1
10	SQUARE D	MG24118	16 AMP CIRCUIT BREAKER	1
11	WEIDMULLER	1020100000	TERMINAL BLOCK	20
12	WEIDMULLER	1050000000	END COVER	4
13	WEIDMULLER	1010100000	GROUND TERMINAL	10
14	PANDUIT	F1.5X2LG6 / C1.5LG6	WIRE WAY WITH COVER-27-INCH	2
15	PANDUIT	F1.5X2LG6 / C1.5LG6	WIRE WAY WITH COVER-9.75-INCH	2
16	HOFFMAN	DAH1001A	100 WATT HEATER	1
17	ROSS	CP18NA87516W	6 STATION VALVE MANIFOLD ASSEMBLY	1
18	MONNIER	116-4006-12PS	PRESSURE REGULATOR	1
19	N/A	N/A	1.5-INCH NPT PIPE NIPPLE, 6-INCH LONG, 304SS	1
20	DIXON VALVE & COUPLING CO.	DRST20	1.5-INCH MNTP X 1.5-INCH HOSE COMBINATION KING NIPPLE	7
21	N/A	N/A	1.5-INCH NPT PIPE NIPPLE, 12-INCH LONG, 304SS	6
22	N/A	N/A	CLASS 150 FNPT COUPLING, 1.5 IN, 304SS	7
23	MCMaster-CARR	63595K38	1.5-INCH SNAP IN SEALING GROMMET	7
24	PARKER	PS417BP	PILOT AIR FILTER MOUNTING BRACKET KIT	1
25	PARKER	14F15B	PILOT AIR FILTER	1
26	LEGRIS	3109 56 14	MALE STUD ELBOW, 0.25-INCH NPT X 0.25-INCH TUBE	3
27	LEGRIS	3109 56 11	MALE STUD ELBOW, 0.125-INCH NPT X 0.25-INCH TUBE	1
29	MCMaster-CARR	63595K32	0.25-INCH SNAP IN SEALING GROMMET	1
30	CUTLER-HAMMER	F34FB197LAP24	PILOT LIGHT	1
31	SCHNEIDER ELECTIRC	OTB1C0DM9LP	CAN-OPEN I/O MODULE	1
36	MURR ELEKTRONIK	7000-18021-60160150	MSUD VALVE FORM A 18mm WITH CABLE PVC-JZ 3x0.75 BLACK 1.5m	6
37	STRIDE	SE-SW5U	5 PORT ETHERNET SWITCH	1
38	MCMaster-CARR	3846K313	CENTER-BACK CONNECTION, 2.5-INCH DIAMETER PRESSURE GAUGE, 0.25-INCH NPT CONNECTION, 0-100 PSI	1
39	N/A	N/A	1.5-INCH NPT PIPE NIPPLE,1.5 INCH LONG, 304SS	1
40	N/A	N/A	1.5-INCH NPT PIPE NIPPLE,1.75INCH LONG, 304SS	1
41	N/A	N/A	1-1/2" FNPT UNION-304SS	1
42	SCHNEIDER / TELEMECANIQUE	XMLK100P2D23 / XZCP1141L2	PRESSURE TRANSDUCER (WITH QUICK CONNECT CABLE)	1
43	SCHNEIDER ELECTRIC	ABL8REM24050	24VDC POWER SUPPLY	1
44	GRID CONNECT	GC-CAN-CAB-2MT-GC	CANOpen Cable	1
45	SCHNEIDER ELECTRIC	TM2AMI2HT	EXPANSION, ANALOG 2 IN, 0-10 V, 4-20 mA	1
46	PANDUIT	STPCH2MBBL	ETHERNET CABLE	1
47	HOFFMAN	CSD363610SSR	304SS NEMA 4X ENCLOSURE	1
48	HOFFMAN	CP3636G	PANEL - CONDUCTIVE COATING	1
49	HOFFMAN	N/A	NEMA 4X ENCLOSURE DOOR	1

	NAME	DATE	PROPRIETARY AND CONFIDENTIAL THE INFORMATION CONTAINED IN THIS DRAWING IS THE SOLE PROPERTY OF ENVIROMIX. ANY REPRODUCTION IN PART OR AS A WHOLE WITHOUT THE WRITTEN PERMISSION OF ENVIROMIX IS PROHIBITED.	MATERIAL 304SS	COMMENTS: NONE
DRAWN	JAK	10/31/14		FINISH -	
CHECKED	WKK	10/31/14		QUANTITY 2	



PROJECT:
CITY OF GLENS FALLS

AERATION SYSTEM IMPROVEMENTS PROJECT

SIZE B	ITEM 6-VALVE PANEL	REV 1.2
DO NOT SCALE DRAWING		C - 2



