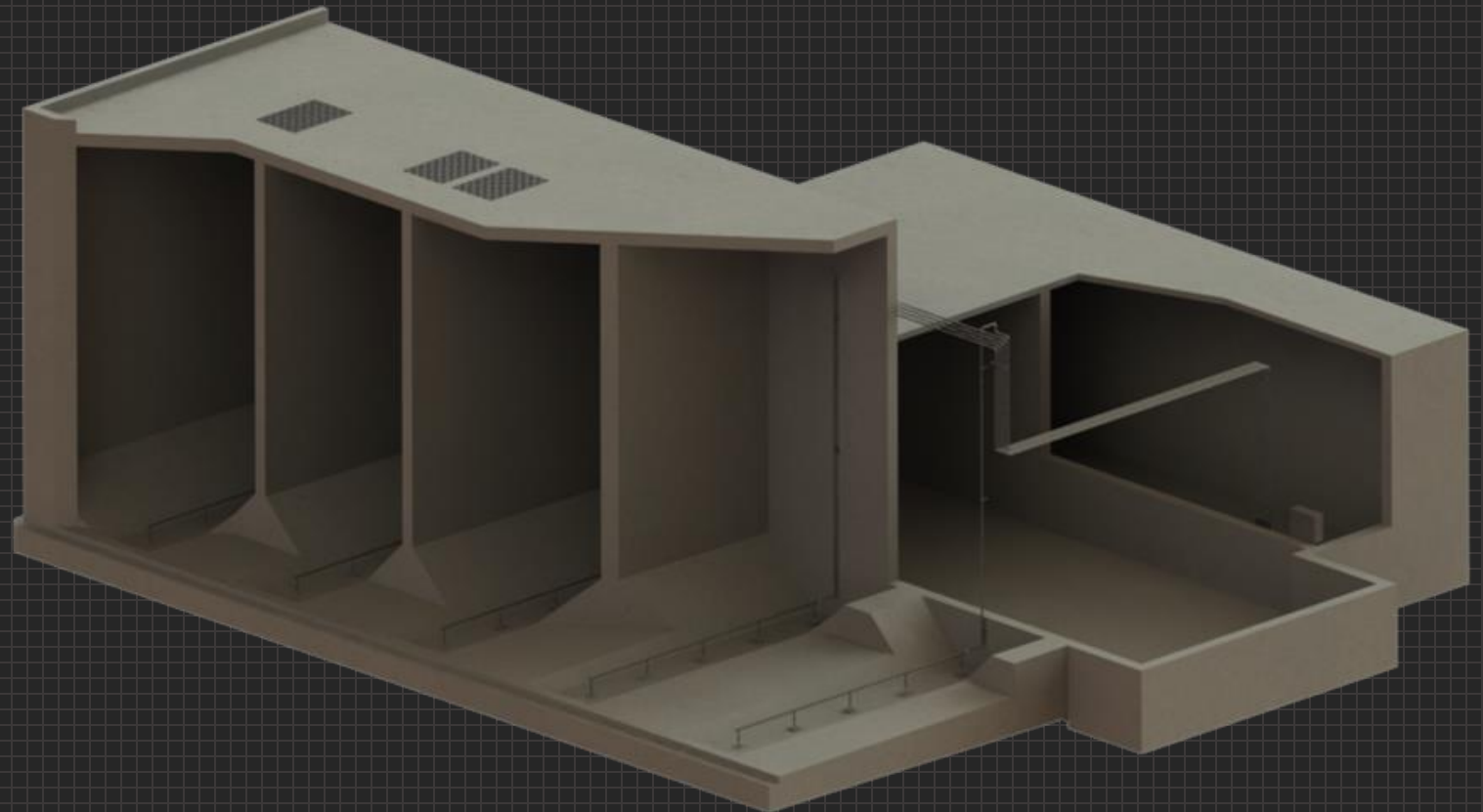




### Plant Background

- Nashua, NH WWTW
- EnviroMix Product:
  - BioMix™
- Mixing Application:
  - Sludge Mixing: Primary (4%) and WAS (2%)
- 16 MGD Facility
- Design Engineer:
  - Wright-Pierce





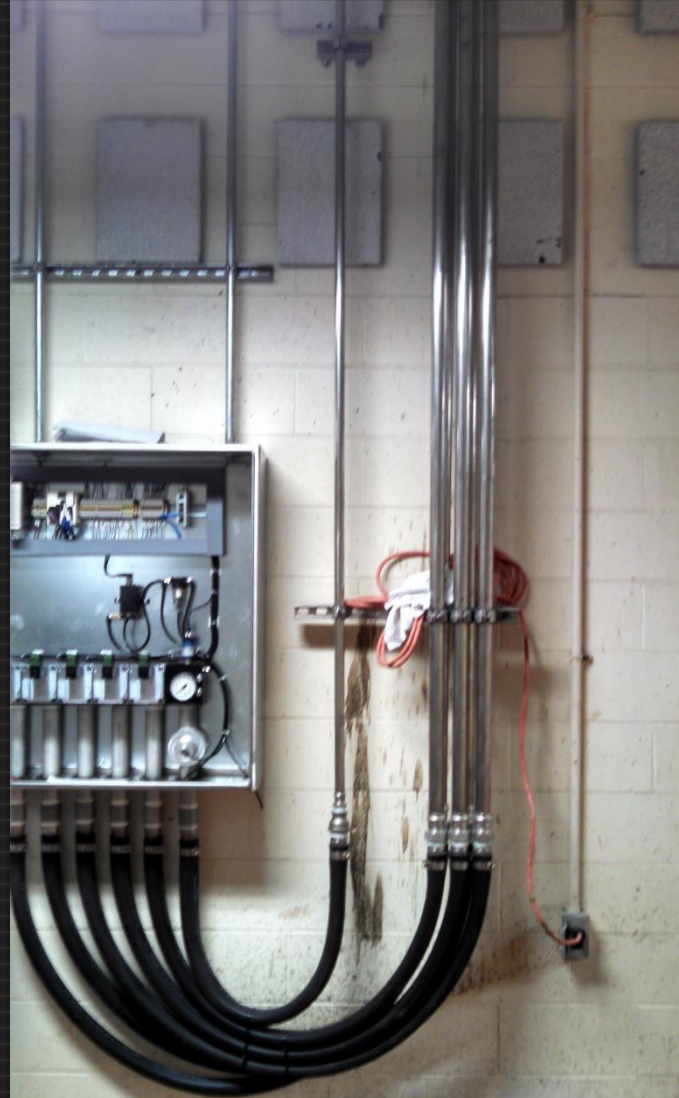
Atlas Copco Air Compressor with Integral Air Receiver



Duty and Standby Air Compressors



Open Valve Control Panel



Valve Control Panel



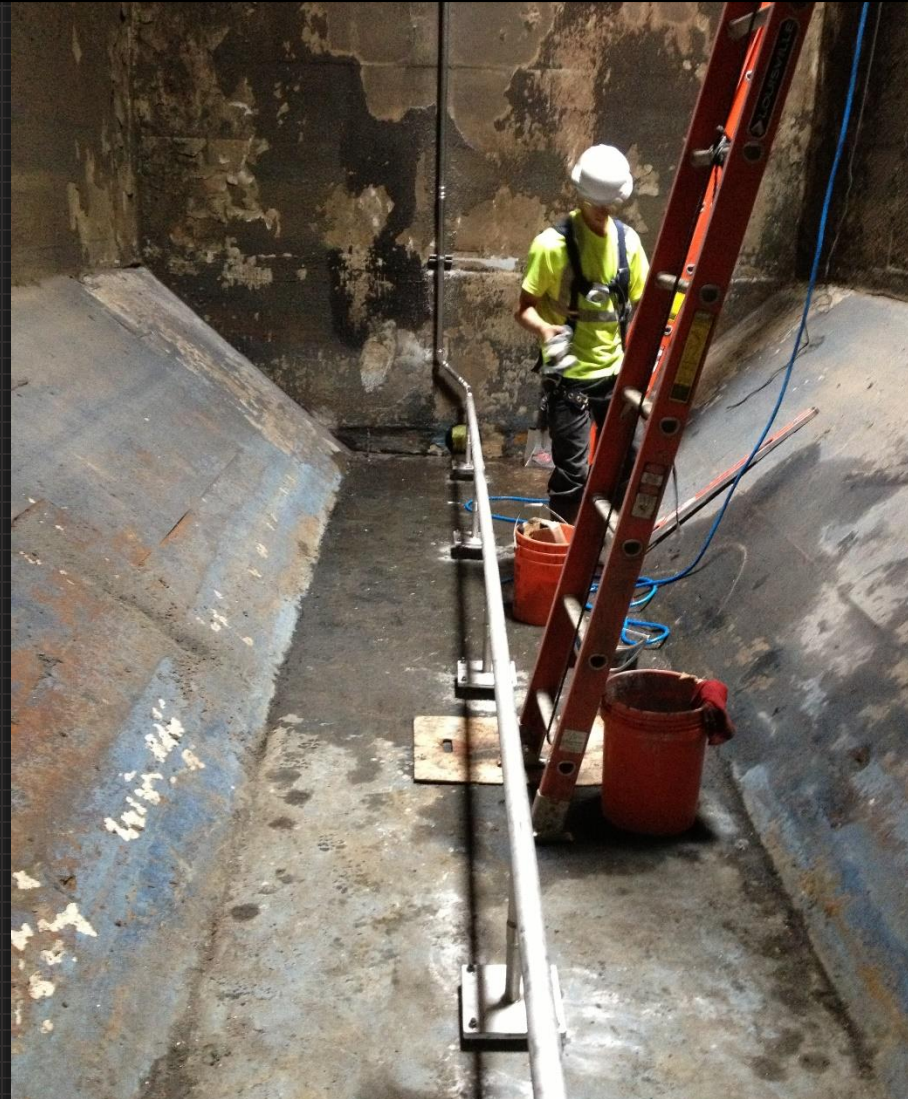
Header Supply Piping is connected to the VCP by Industrial Hose



180 East Bay Street, Suite 200  
Charleston, SC 29401  
P. (843)573-7510  
F. (843)573-7531  
[www.enviro-mix.com](http://www.enviro-mix.com)



Nozzle Header Installation



Nozzle Header Installation