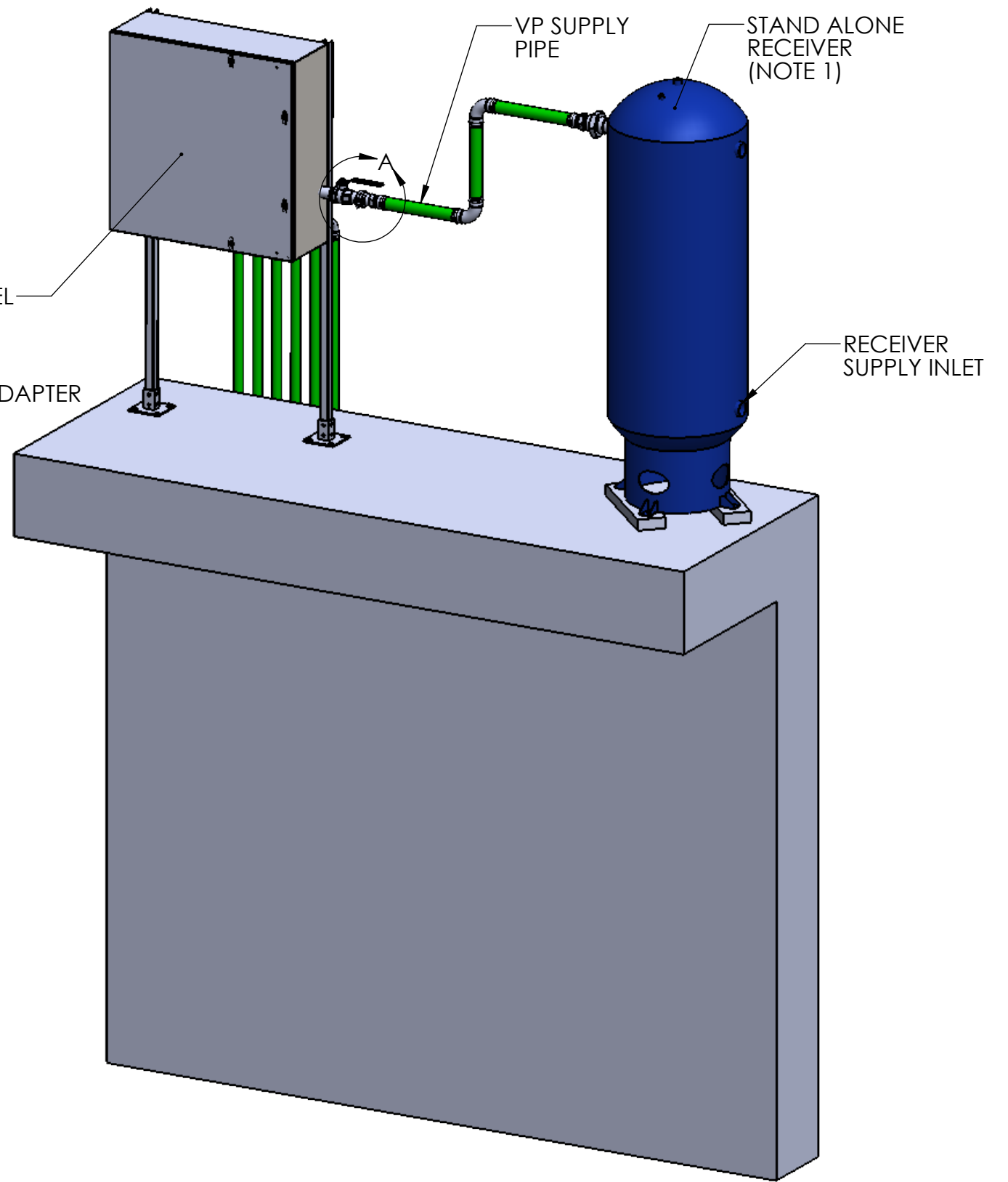


DETAIL A
SCALE 1 : 2

- NOTES:
1. RECEIVER LOCATION VARIES. POSSIBLE LOCATIONS INCLUDE:
- ADJACENT TO VALVE PANEL
 - INTEGRAL TO COMPRESSOR PACKAGE
 - IN ADJACENT STRUCTURE

ISOMETRIC RENDERING - FRONT VIEW



| No | DATE | NAME | REVISION |
|----|------|------|----------|
| 01 | | | |
| 02 | | | |
| 03 | | | |
| 04 | | | |
| 05 | | | |

| | NAME | DATE |
|----------|------|---------|
| DRAWN | WLE | 11/2/15 |
| CHECKED | WWK | 11/2/15 |
| ENGINEER | - | |

PROPRIETARY AND CONFIDENTIAL
THE INFORMATION CONTAINED IN THIS DRAWING IS THE SOLE PROPERTY OF ENVIROMIX. ANY REPRODUCTION IN PART OR AS A WHOLE WITHOUT THE WRITTEN PERMISSION OF ENVIROMIX IS PROHIBITED.

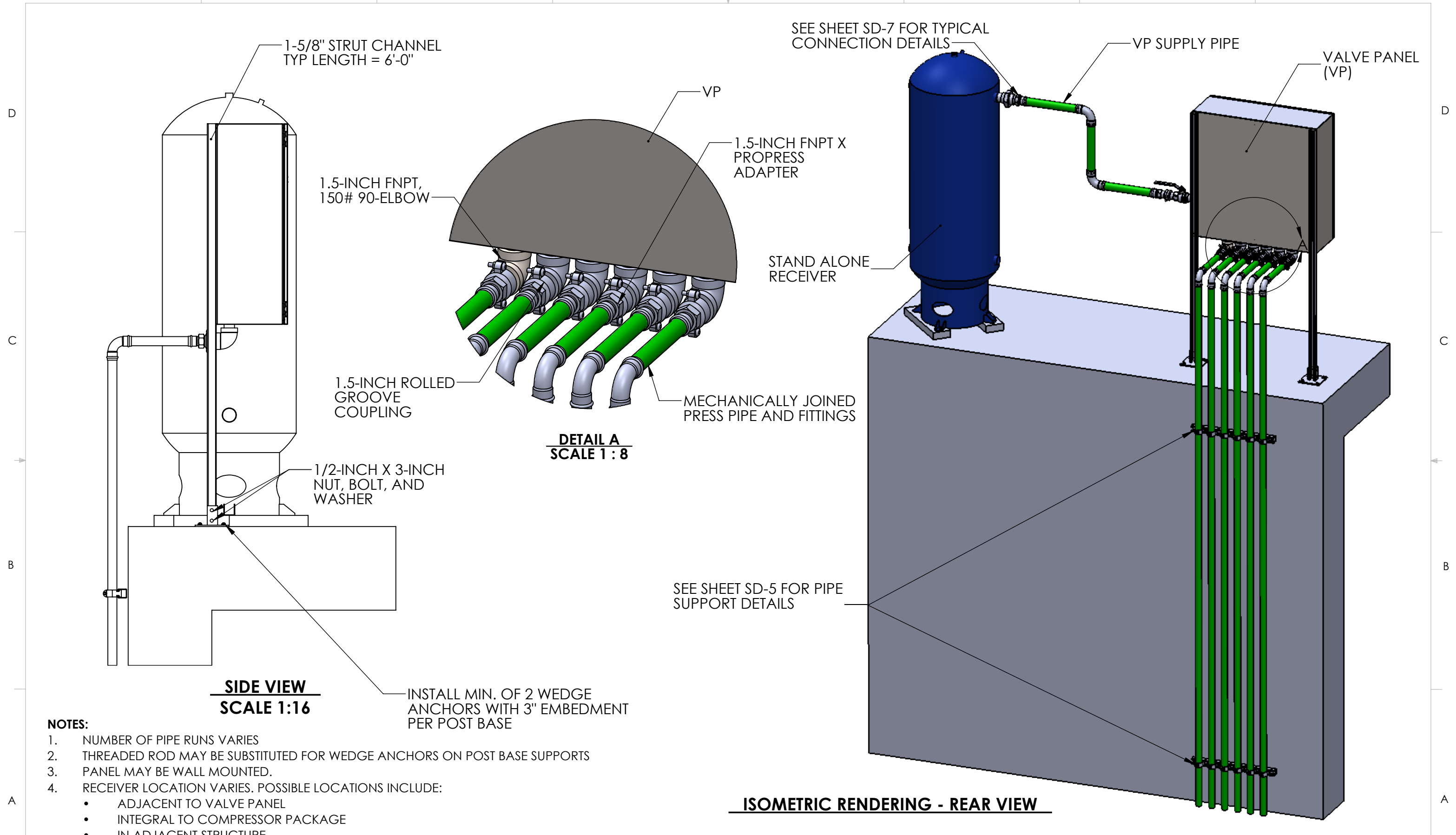
| MATERIAL | PROJECT: |
|----------|------------------|
| - | ENVIROMIX, INC. |
| QUANTITY | STANDARD DETAILS |
| - | |



COMMENTS:
-

ITEM
VALVE CONTROL PANEL
TYPICAL CONNECTION
SCALE: 1:24 -

11/2/2015
REV 1.0
SD - 1 OF 8



- NOTES:**
1. NUMBER OF PIPE RUNS VARIES
 2. THREADED ROD MAY BE SUBSTITUTED FOR WEDGE ANCHORS ON POST BASE SUPPORTS
 3. PANEL MAY BE WALL MOUNTED.
 4. RECEIVER LOCATION VARIES. POSSIBLE LOCATIONS INCLUDE:
 - ADJACENT TO VALVE PANEL
 - INTEGRAL TO COMPRESSOR PACKAGE
 - IN ADJACENT STRUCTURE

INSTALL MIN. OF 2 WEDGE ANCHORS WITH 3" EMBEDMENT PER POST BASE

| No | DATE | NAME | REVISION | NAME | DATE |
|----|------|------|----------|----------|-------------|
| 01 | | | | | |
| 02 | | | | DRAWN | WLE 11/2/15 |
| 03 | | | | CHECKED | WWK 11/2/15 |
| 04 | | | | | |
| 05 | | | | ENGINEER | - |

PROPRIETARY AND CONFIDENTIAL
 THE INFORMATION CONTAINED IN THIS DRAWING IS THE SOLE PROPERTY OF ENVIROMIX. ANY REPRODUCTION IN PART OR AS A WHOLE WITHOUT THE WRITTEN PERMISSION OF ENVIROMIX IS PROHIBITED.

| MATERIAL | PROJECT: |
|----------|------------------|
| - | ENVIROMIX, INC. |
| QUANTITY | STANDARD DETAILS |
| - | |



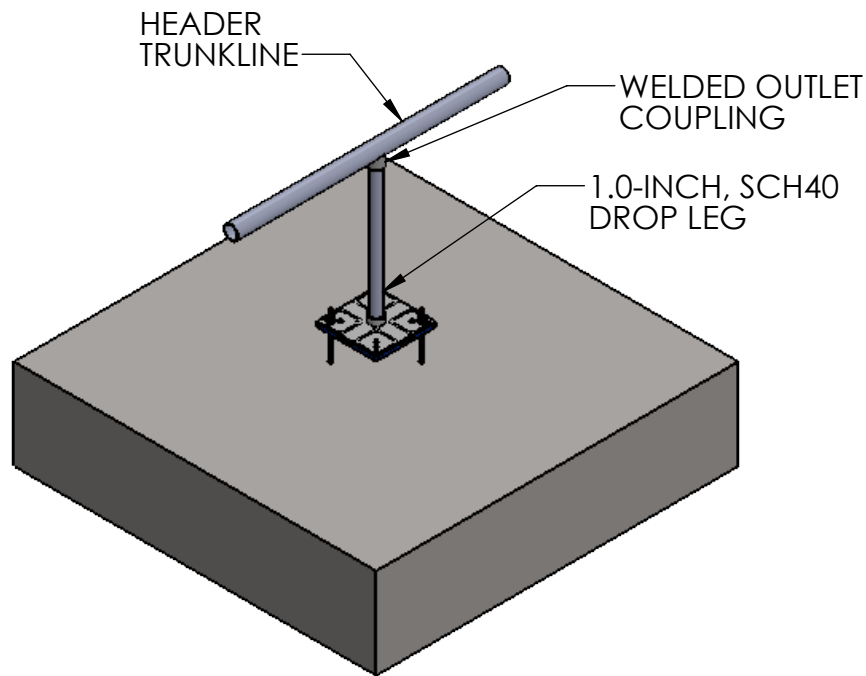
COMMENTS:
-

ITEM
 VALVE CONTROL PANEL
 TYPICAL CONNECTION
 SCALE: 1:24

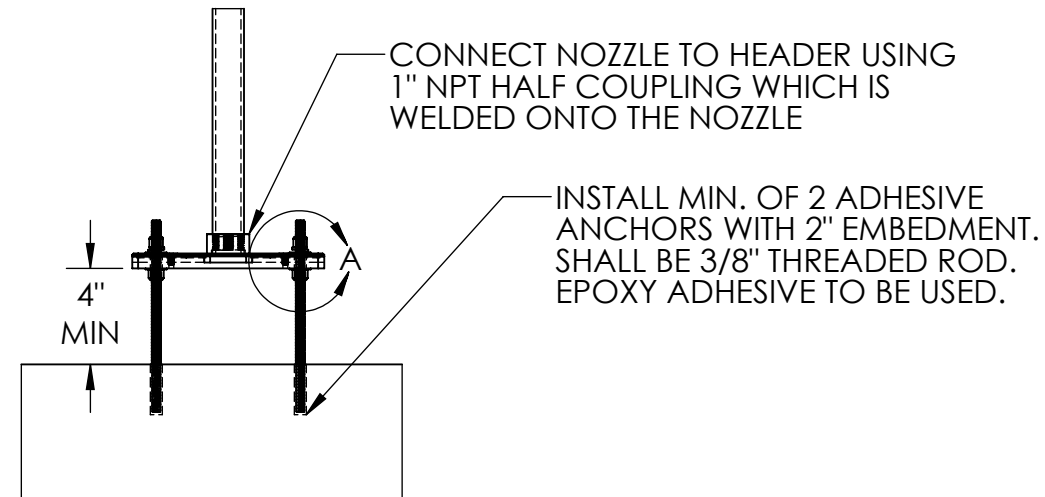
REV
1.0
 11/2/2015
 SD - 2 OF 8

D
C
B
A

D
C
B
A

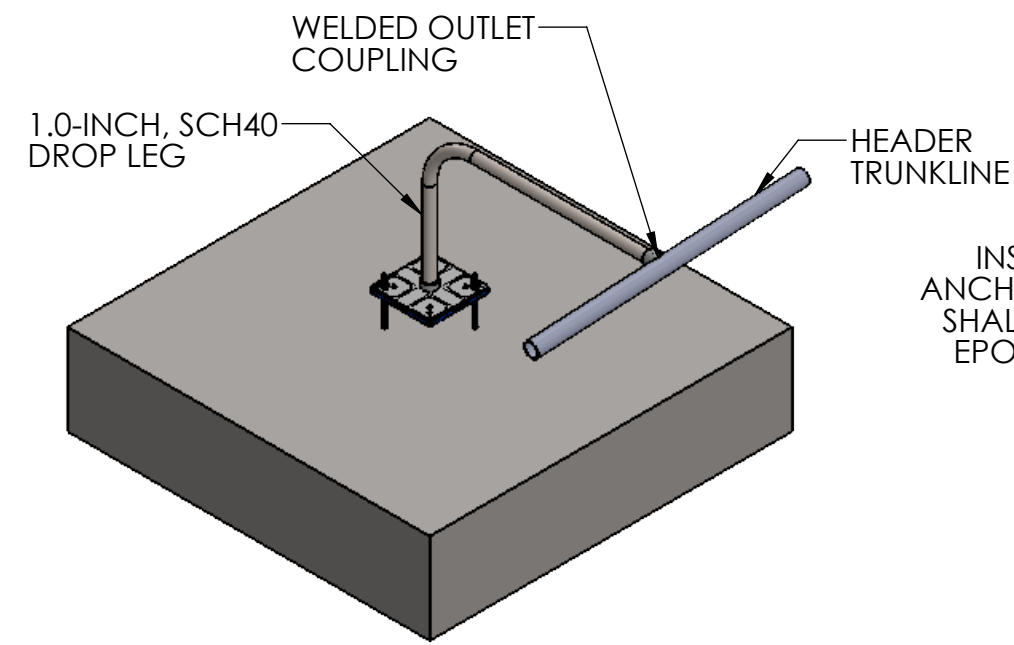


LINEAR DROP LEG INSTALLATION DETAIL

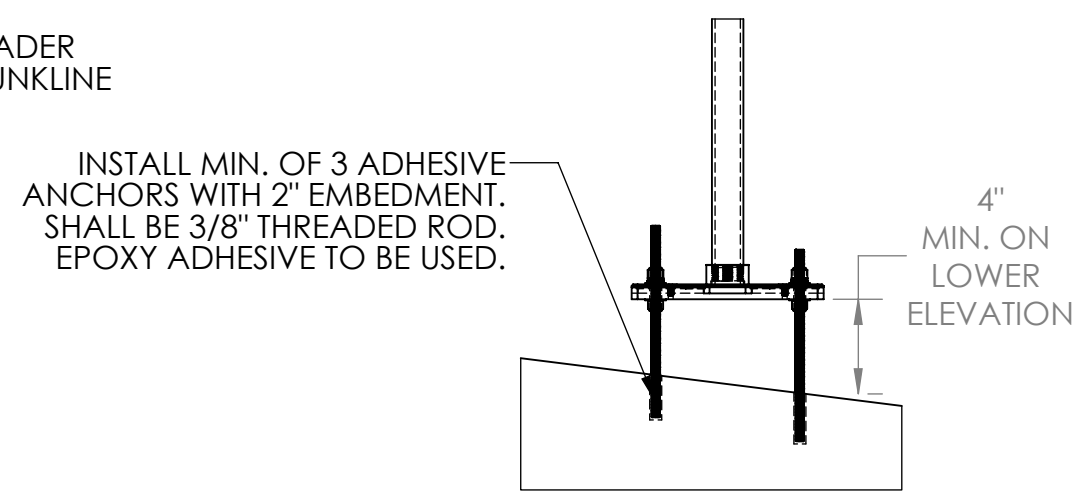


**FLAT FLOOR NOZZLE SECTION
SCALE 1:8**

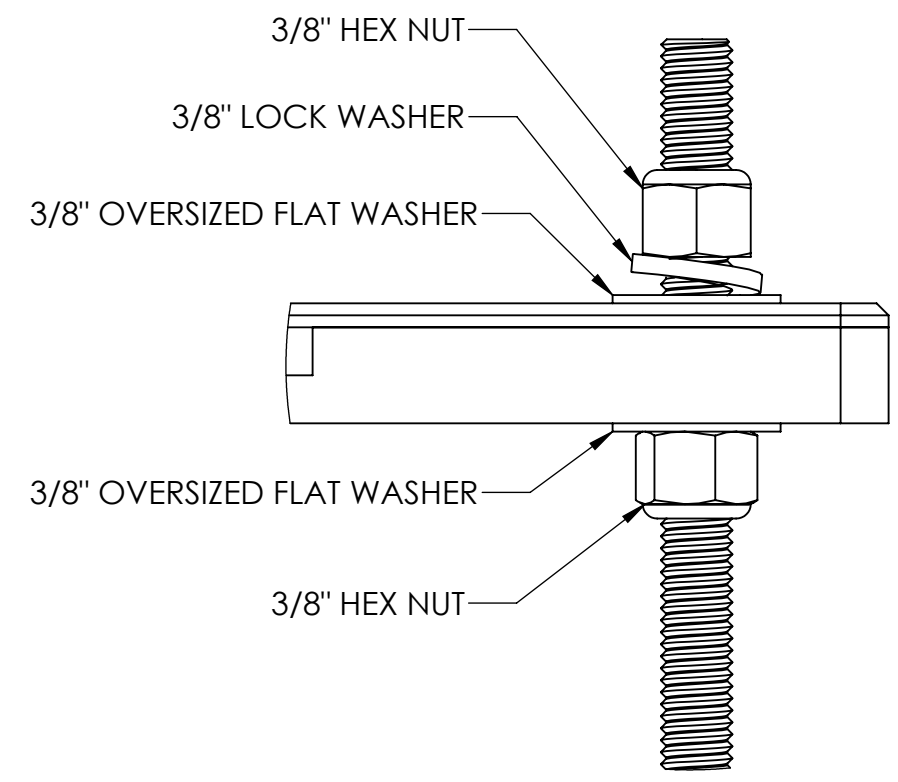
- NOTES:**
1. ALL NOZZLES ON A GIVEN HEADER TO BE INSTALLED WITHIN 1/2-INCH ELEVATION OF EACH OTHER. SUBMIT LEVEL DOCUMENTATION TO ENVIROMIX AT STARTUP.
 2. APPLY PIPE TAPE AND THREAD COMPOUND TO ALL THREADED PIPING CONNECTIONS.
 3. DO NOT INTRODUCE CONSTRUCTION DEBRIS SUCH AS PIPE TAPE INTO THE COMPRESSED AIR PIPING SYSTEM.
 4. INSTALLATION OF OFFSET STYLE DROP LEGS WILL BE THE SAME AS SHOWN FOR STRAIGHT DROP LEGS.
 5. INSTALLATION OF CURVED HEADER TRUNKLINES WILL BE THE SAME AS SHOWN FOR STRAIGHT HEADER TRUNKLINES.



OFFSET DROP LEG INSTALLATION DETAIL



**SLOPED FLOOR NOZZLE SECTION
SCALE 1:8**



**DETAIL A
SCALE 1 : 1**

| No | DATE | NAME | REVISION | NAME | DATE |
|----|------|------|----------|----------|-------------|
| 01 | | | | | |
| 02 | | | | DRAWN | WLE 11/2/15 |
| 03 | | | | CHECKED | WWK 11/2/15 |
| 04 | | | | ENGINEER | - |
| 05 | | | | | |

PROPRIETARY AND CONFIDENTIAL
THE INFORMATION CONTAINED IN THIS
DRAWING IS THE SOLE PROPERTY OF
ENVIROMIX. ANY REPRODUCTION IN PART OR
AS A WHOLE WITHOUT THE WRITTEN
PERMISSION OF ENVIROMIX IS PROHIBITED.

| MATERIAL | PROJECT: |
|----------|------------------|
| - | ENVIROMIX, INC. |
| QUANTITY | STANDARD DETAILS |
| - | |



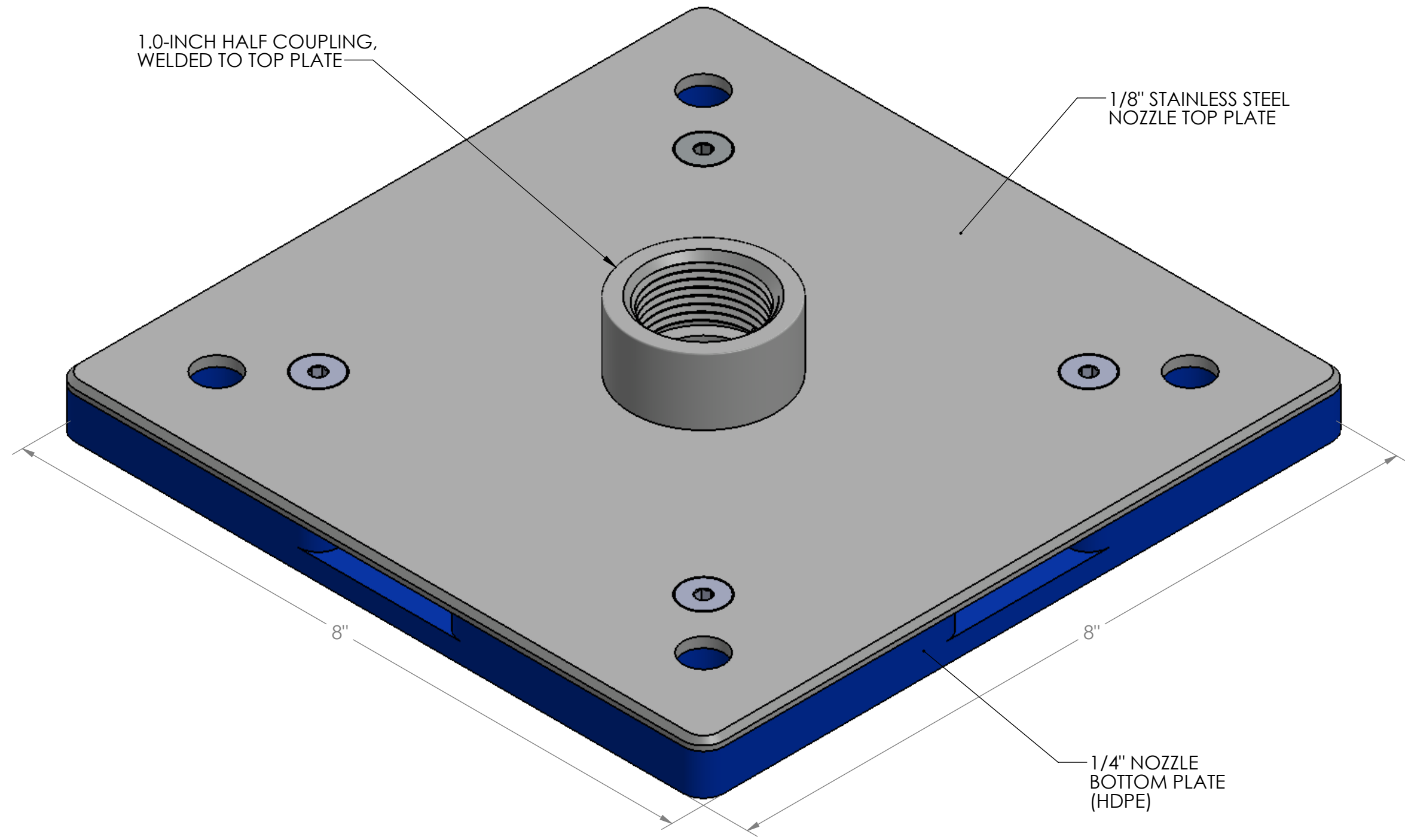
COMMENTS:
-

ITEM
NOZZLE/HEADER
INSTALLATION DETAILS
SCALE: 1:18 -

REV
11/2/2015
1.0
SD - 3 OF 8

8 7 6 5 4 3 2 1

D
C
B
A



1.0-INCH HALF COUPLING,
WELDED TO TOP PLATE

1/8" STAINLESS STEEL
NOZZLE TOP PLATE

8"

8"

1/4" NOZZLE
BOTTOM PLATE
(HDPE)

ISOMETRIC VIEW

| No | DATE | NAME | REVISION | NAME | DATE |
|----|------|------|----------|-----------------|-------------|
| 01 | | | | | |
| 02 | | | | DRAWN | WLE 11/2/15 |
| 03 | | | | CHECKED | WWK 11/2/15 |
| 04 | | | | | |
| 05 | | | | ENGINEER | - |

PROPRIETARY AND CONFIDENTIAL
THE INFORMATION CONTAINED IN THIS
DRAWING IS THE SOLE PROPERTY OF
ENVIROMIX. ANY REPRODUCTION IN PART OR
AS A WHOLE WITHOUT THE WRITTEN
PERMISSION OF ENVIROMIX IS PROHIBITED.

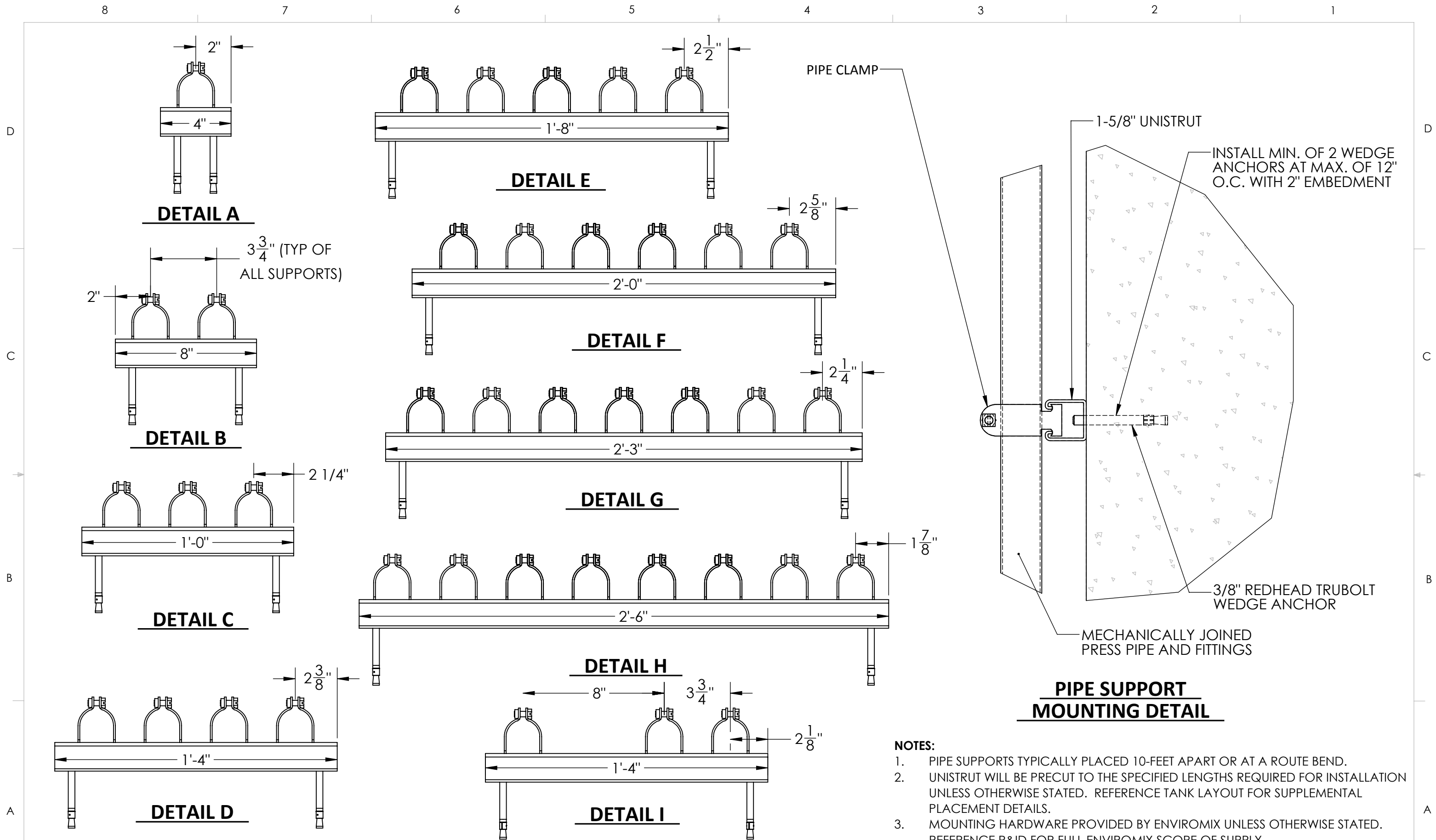
| MATERIAL | PROJECT: |
|----------|------------------|
| - | ENVIROMIX, INC. |
| QUANTITY | STANDARD DETAILS |
| - | |



COMMENTS:
-

| ITEM | REV |
|---------------|-------------|
| NOZZLE DETAIL | 1.0 |
| SCALE: 1:1 | SD - 4 OF 8 |

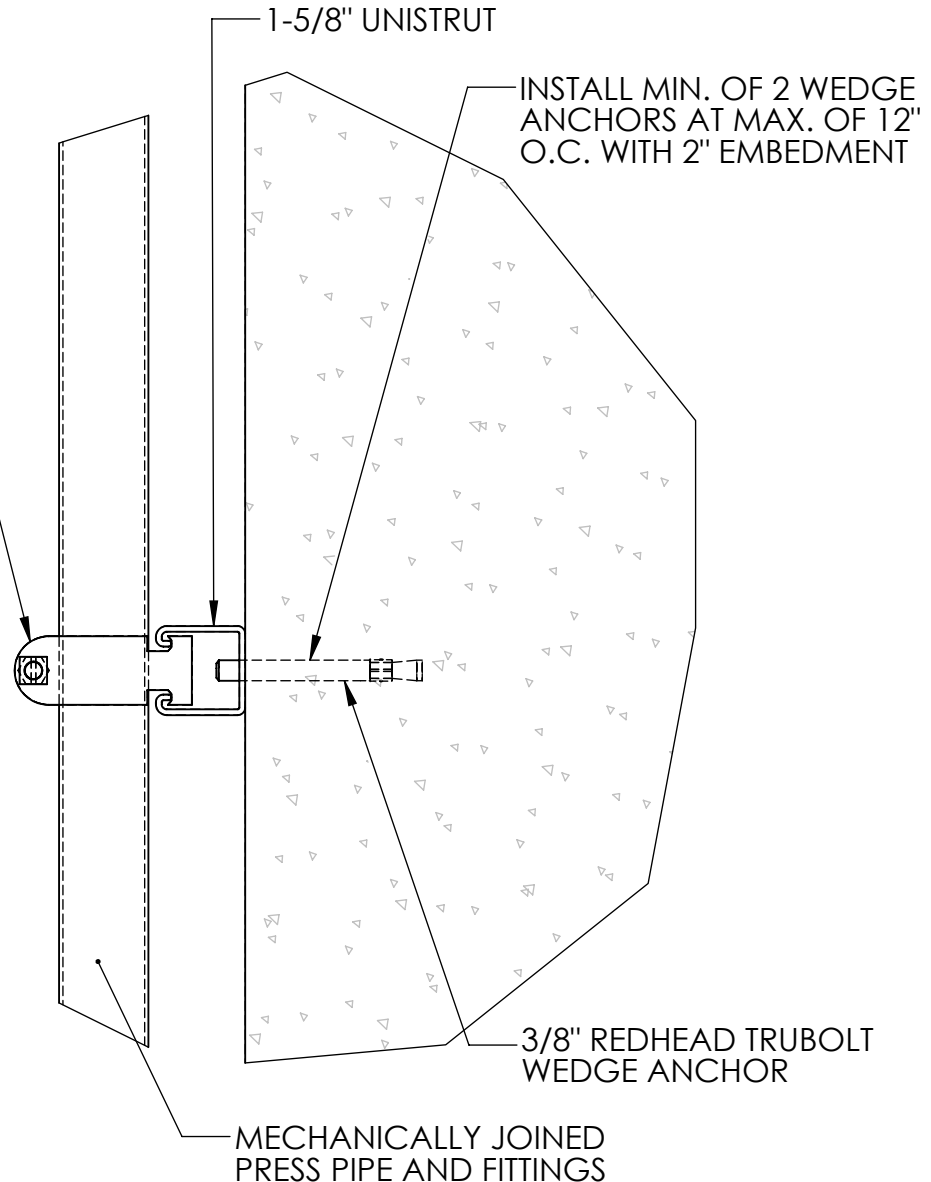
8 7 6 5 4 3 2 1



NOTES:

1. PIPE SUPPORTS TYPICALLY PLACED 10-FOOT APART OR AT A ROUTE BEND.
2. UNISTRUT WILL BE PRECUT TO THE SPECIFIED LENGTHS REQUIRED FOR INSTALLATION UNLESS OTHERWISE STATED. REFERENCE TANK LAYOUT FOR SUPPLEMENTAL PLACEMENT DETAILS.
3. MOUNTING HARDWARE PROVIDED BY ENVIROMIX UNLESS OTHERWISE STATED. REFERENCE P&ID FOR FULL ENVIROMIX SCOPE OF SUPPLY.

PIPE SUPPORT MOUNTING DETAIL



| No | DATE | NAME | REVISION |
|----|------|------|----------|
| 01 | | | |
| 02 | | | |
| 03 | | | |
| 04 | | | |
| 05 | | | |

PROPRIETARY AND CONFIDENTIAL
 THE INFORMATION CONTAINED IN THIS DRAWING IS THE SOLE PROPERTY OF ENVIROMIX. ANY REPRODUCTION IN PART OR AS A WHOLE WITHOUT THE WRITTEN PERMISSION OF ENVIROMIX IS PROHIBITED.

| NAME | DATE |
|-------------|---------|
| DRAWN WLE | 11/2/15 |
| CHECKED WWK | 11/2/15 |
| ENGINEER - | |

MATERIAL
-

PROJECT:
ENVIROMIX, INC.

QUANTITY
STANDARD DETAILS



COMMENTS:
-

ITEM
PIPE SUPPORT DETAILS

SCALE: 1:5

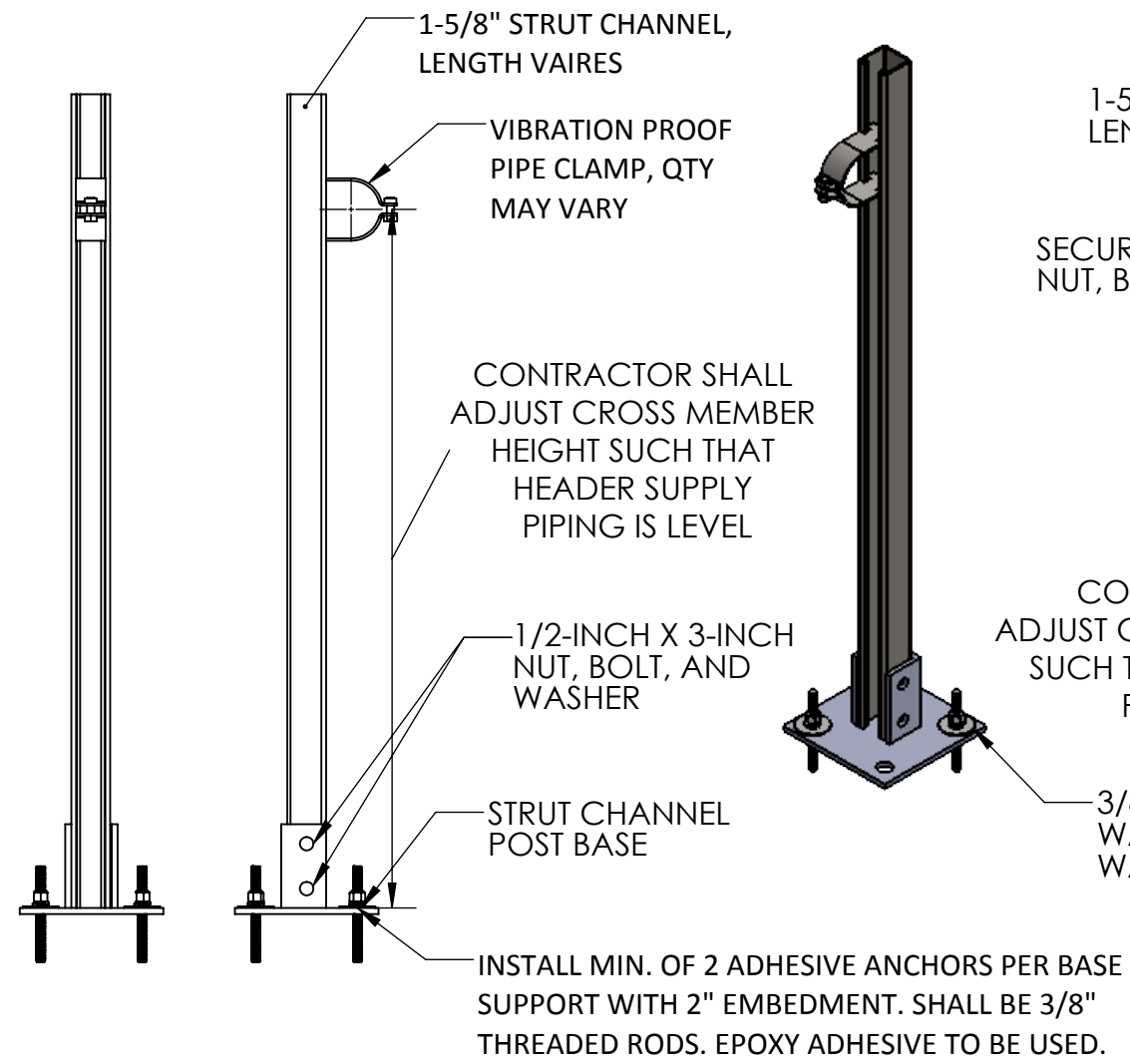
11/2/2015

REV **1.0**

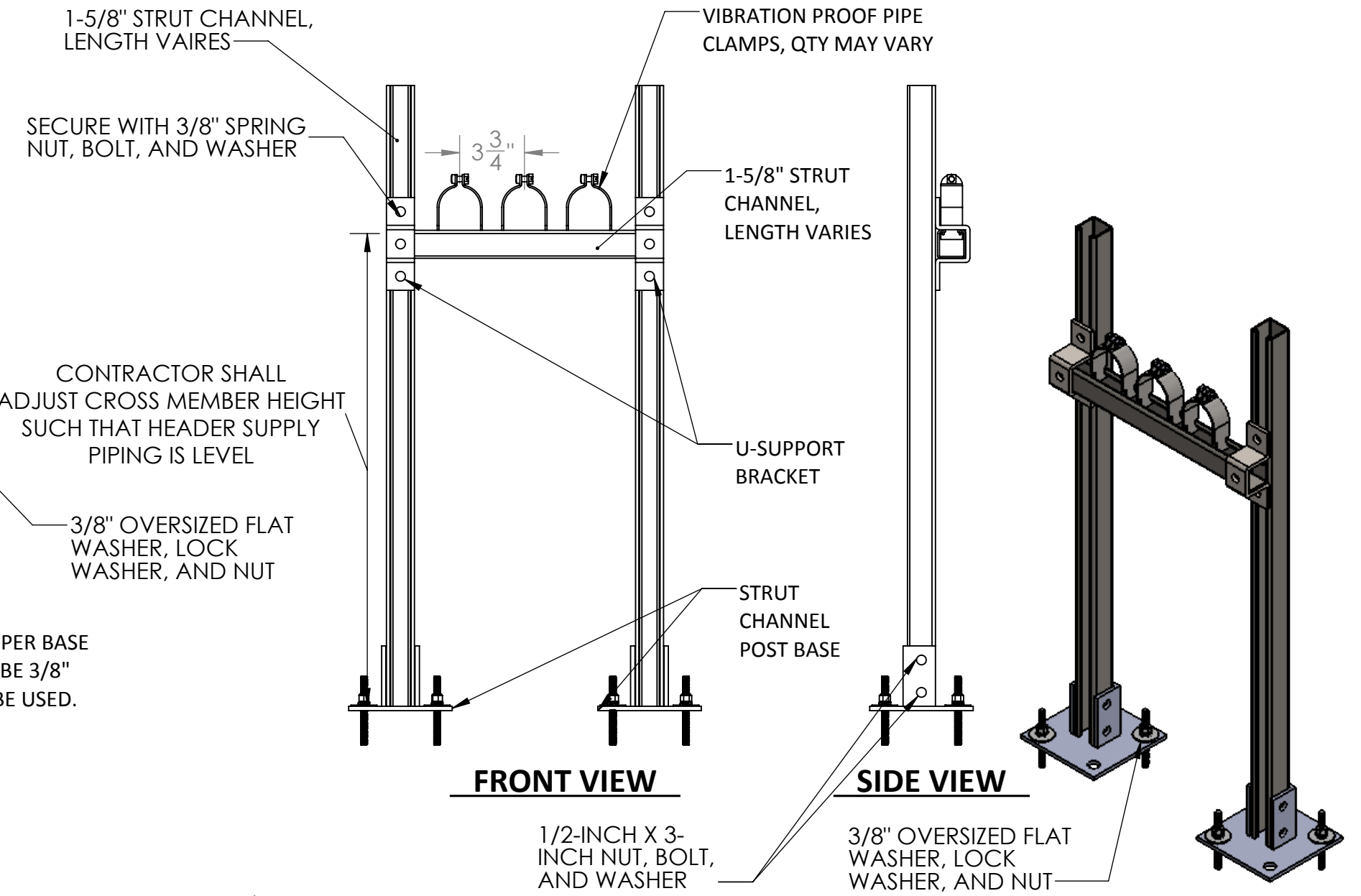
SD - 5 OF 8

D
C
B
A

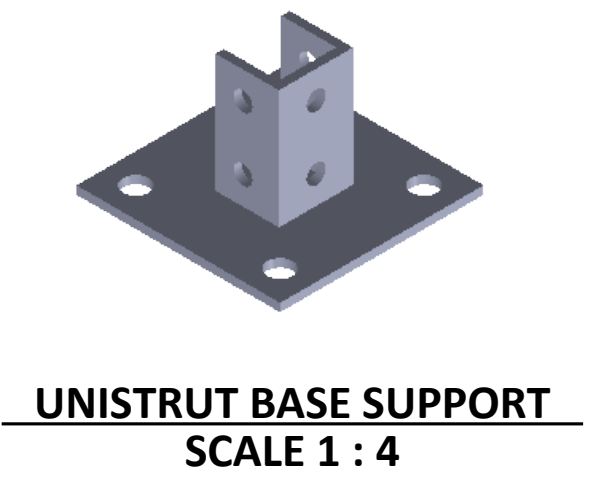
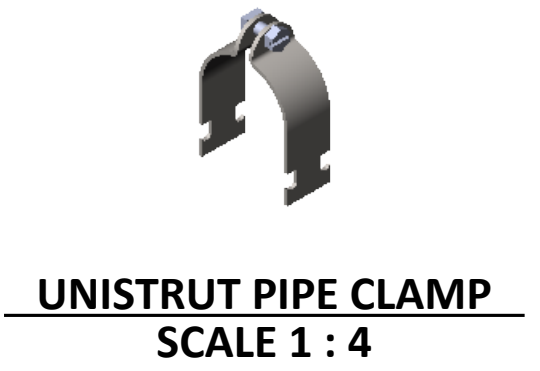
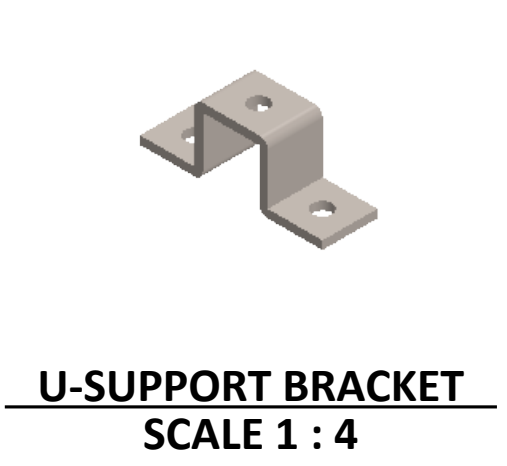
D
C
B
A



DETAIL A: VERTICAL PIPE SUPPORT
SCALE 1:12



DETAIL B: HORIZONTAL PIPE SUPPORT
SCALE 1:12



NOTES:
1. FOR SLOPED FLOOR INSTALLATION, LEVEL POST BASE WITH NUT. REFERENCE NOZZLE INSTALLATION ON SD-3.

| No | DATE | NAME | REVISION | NAME | DATE |
|----|------|------|----------|----------|-------------|
| 01 | | | | | |
| 02 | | | | DRAWN | WLE 11/2/15 |
| 03 | | | | CHECKED | WWK 11/2/15 |
| 04 | | | | | |
| 05 | | | | ENGINEER | - |

PROPRIETARY AND CONFIDENTIAL
THE INFORMATION CONTAINED IN THIS
DRAWING IS THE SOLE PROPERTY OF
ENVIROMIX. ANY REPRODUCTION IN PART OR
AS A WHOLE WITHOUT THE WRITTEN
PERMISSION OF ENVIROMIX IS PROHIBITED.

| MATERIAL | PROJECT: |
|----------|------------------|
| - | ENVIROMIX, INC. |
| QUANTITY | STANDARD DETAILS |
| - | |

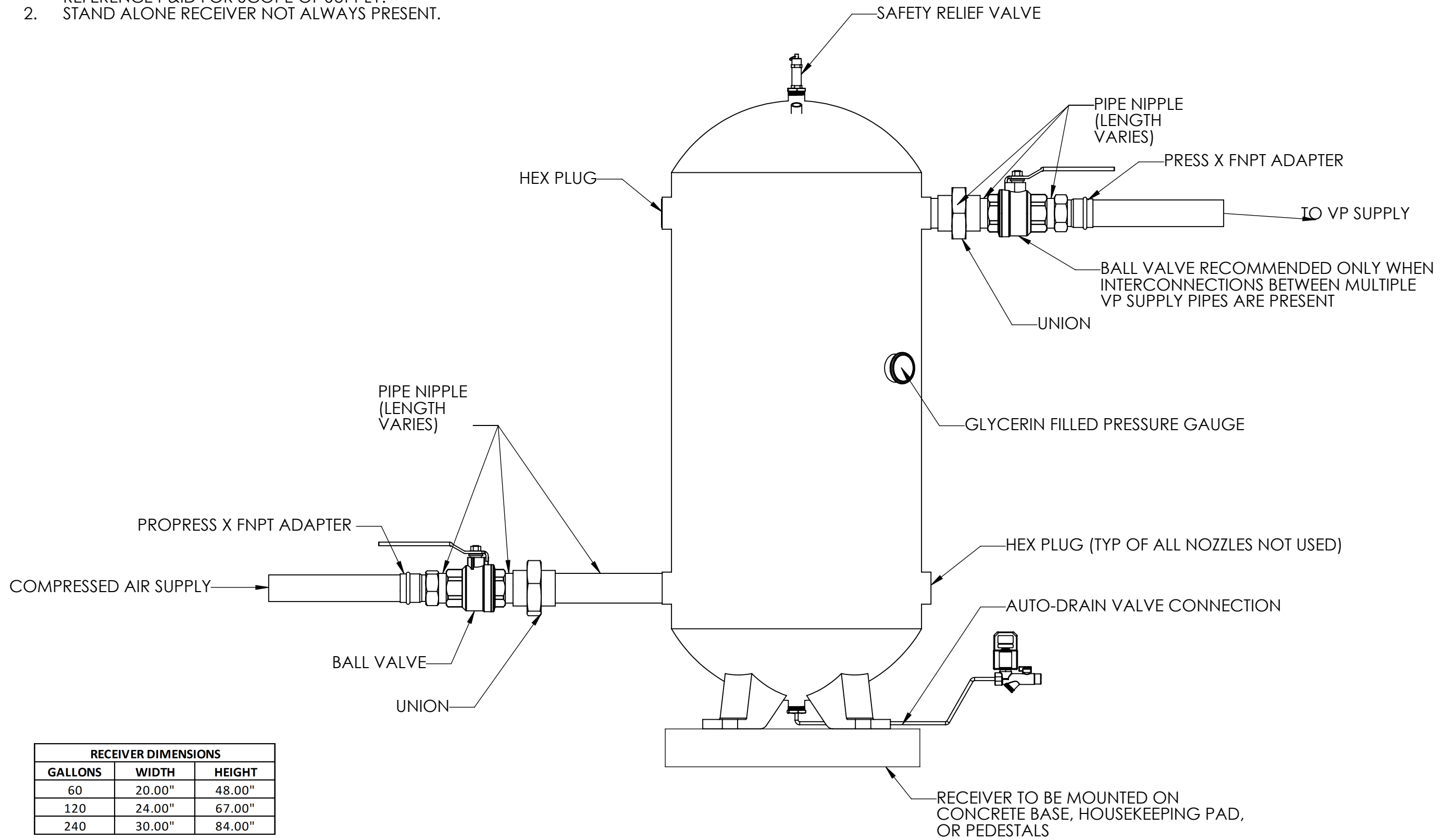


COMMENTS:
-

ITEM
TYPICAL VERTICAL AND
HORIZONTAL SUPPORTS
SCALE: 1:12 -

REV
11/2/2015
1.0
SD - 6 OF 8

- NOTES:
 1. STANDARD INSTALLATION DETAILS SHOWN.
 REFERENCE P&ID FOR SCOPE OF SUPPLY.
 2. STAND ALONE RECEIVER NOT ALWAYS PRESENT.



| RECEIVER DIMENSIONS | | |
|---------------------|--------|--------|
| GALLONS | WIDTH | HEIGHT |
| 60 | 20.00" | 48.00" |
| 120 | 24.00" | 67.00" |
| 240 | 30.00" | 84.00" |

| No | DATE | NAME | REVISION | NAME | DATE |
|----|------|------|----------|----------|-------------|
| 01 | | | | | |
| 02 | | | | DRAWN | WLE 11/2/15 |
| 03 | | | | CHECKED | WWK 11/2/15 |
| 04 | | | | ENGINEER | - |
| 05 | | | | | |

PROPRIETARY AND CONFIDENTIAL
 THE INFORMATION CONTAINED IN THIS
 DRAWING IS THE SOLE PROPERTY OF
 ENVIROMIX. ANY REPRODUCTION IN PART OR
 AS A WHOLE WITHOUT THE WRITTEN
 PERMISSION OF ENVIROMIX IS PROHIBITED.

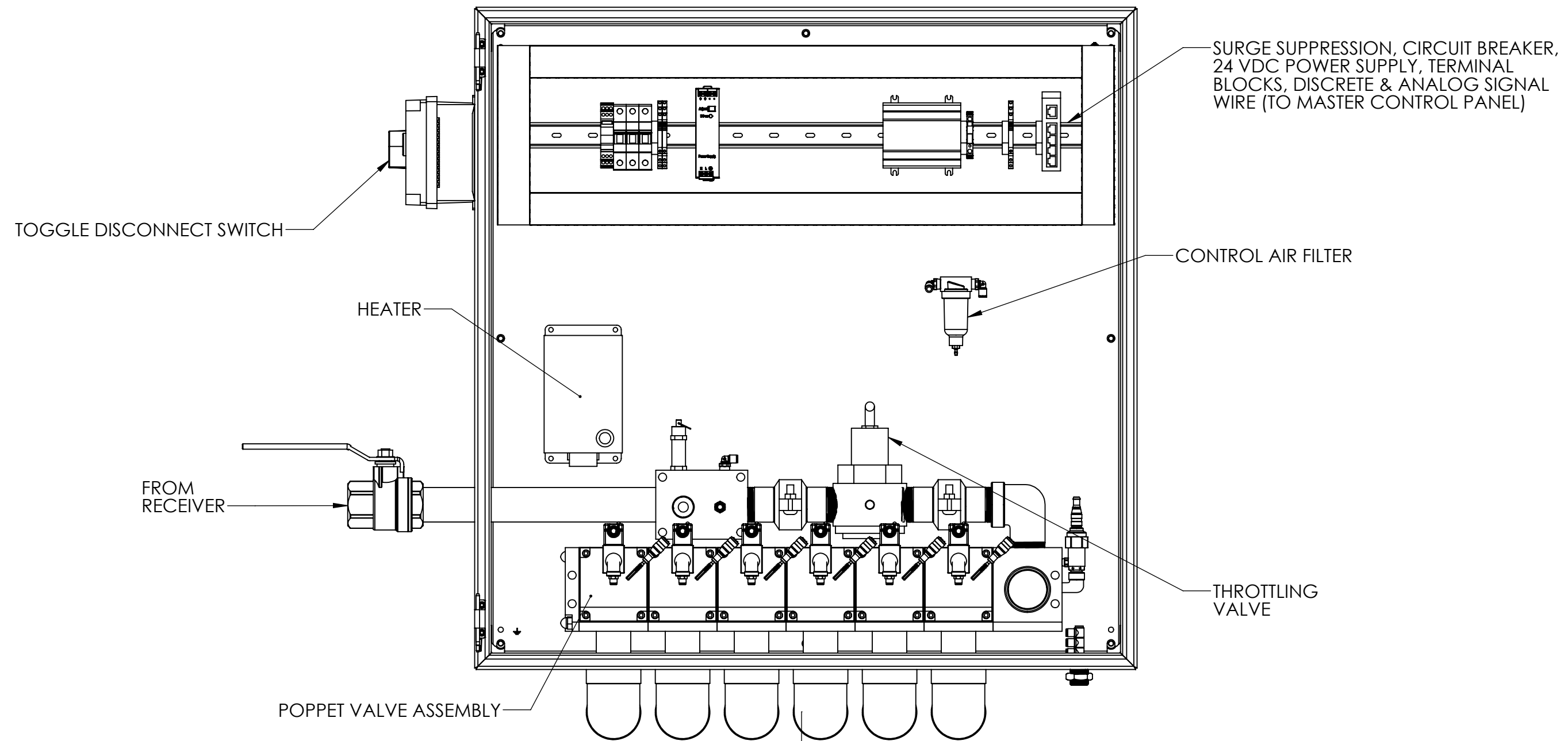
| MATERIAL | PROJECT: |
|----------|------------------|
| - | ENVIROMIX, INC. |
| QUANTITY | STANDARD DETAILS |
| - | |



COMMENTS:
 -

ITEM
 TYPICAL RECEIVER
 CONNECTION/LAYOUT
 SCALE: 1:8

REV
1.0
 11/2/2015
 SD - 7 OF 8



- NOTES:**
1. NUMBER OF VALVES MAY CHANGE DEPENDING ON CONTROL PANEL. SEE TABLE ON THIS SHEET.
 2. PANEL(S) MAY BE WALL OR FLOOR MOUNTED. REFERENCE TANK LAYOUT FOR FURTHER DETAILS.

| VALVE | PANEL SIZE |
|-------|------------|
| 1-2 | 24" X 24" |
| 3-6 | 36" X 36" |
| 7-8 | 42" X 42" |
| 9-12 | CUSTOM |

| No | DATE | NAME | REVISION | NAME | DATE |
|----|------|------|----------|----------|-------------|
| 01 | | | | | |
| 02 | | | | DRAWN | WLE 11/2/15 |
| 03 | | | | CHECKED | WWK 11/2/15 |
| 04 | | | | ENGINEER | - |
| 05 | | | | | |

PROPRIETARY AND CONFIDENTIAL
 THE INFORMATION CONTAINED IN THIS DRAWING IS THE SOLE PROPERTY OF ENVIROMIX. ANY REPRODUCTION IN PART OR AS A WHOLE WITHOUT THE WRITTEN PERMISSION OF ENVIROMIX IS PROHIBITED.

MATERIAL
-

QUANTITY
-

PROJECT:
ENVIROMIX, INC.
STANDARD DETAILS



COMMENTS:
-

ITEM
TYPICAL VALVE PANEL LAYOUT
SCALE: 1:6

11/2/2015
REV 1.0
 SD - 8 OF 8