

Regional Focus:

Kansas & W. Missouri

With numerous projects currently underway in Kansas and western Missouri, EnviroMix continues to provide wastewater treatment plants in the area with solutions that reduce energy consumption, simplify maintenance, and optimize process conditions, enabling highly scalable and flexible operations. These projects incorporate BioMix Compressed Gas Mixing — EnviroMix’s flagship technology — alongside powerful technologies including BioCycle-D Optimized Aerobic Digestion Process, BioMix-AD Anaerobic Digester Mixing System, and the award-winning BioMix-DC Enhanced Anaerobic Mixing System.

To learn more about EnviroMix’s mixing and process technologies, visit www.enviro-mix.com/technology.

City of St. Joseph WPF

Consultant: Carollo, Schneider Electric
Technology: BioMix-AD
Application: Anaerobic Digester

North Topeka WWTP

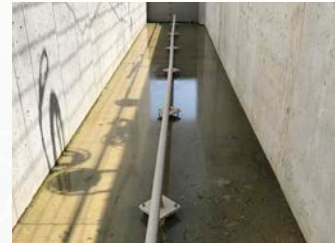
Consultant: Bartlett & West
Technologies: BioMix, BioMix-DC
Application: BNR Selectors

Kansas River WWTP

Consultant: Black & Veatch
Technology: BioMix
Application: BNR Selectors

Westside WWTP

Consultant: Carollo
Technology: BioMix
Application: Channels
Design Flow: 22.5 MGD
Start-up: Sept. 2021



Nelson WWTF

Consultant: Black & Veatch
Technology: BioMix
Application: Sludge Holding Tank

Schwan’s Company

Consultant:
Burns & McDonnell
Technology: BioMix
Application:
Equalization Tank
Design Flow: 0.1 MGD
Start-up: Jan. 2020



City of Emporia

Consultant: Burns & McDonnell
Technologies:
BioMix, BioCycle-D
Applications: BNR Selectors,
Aerobic Digester
Design Flow: 4.6 MGD
Start-up: Feb. 2019



Orange dots indicate EnviroMix installations.

EnviroMix is represented in Kansas and W. Missouri by:



Contact sales@enviro-mix.com

TO DISCUSS EFFICIENT SOLUTIONS FOR YOUR MIXING AND PROCESS NEEDS.

www.enviro-mix.com · 843.573.7510